



Semiahmoo Trail Elementary Addition

Board Presentation

December 8th, 2021



Introduction

Consultant Team

WSP (structural)
AME Group (mechanical)
AES Engineering (electrical)
AE(civil)
studioHub architects

Thank you:

Semiahmoo Elementary Steering Committee:
Lynda Reeve
Elizabeth McDonald

Project Office:
Sheetal Basra
Autumn Sweet
Dave Riley
Trevor Wong

Semiahmoo Trail Elementary Addition

285 students to 540 students (40K + 500E)

10 New Classrooms

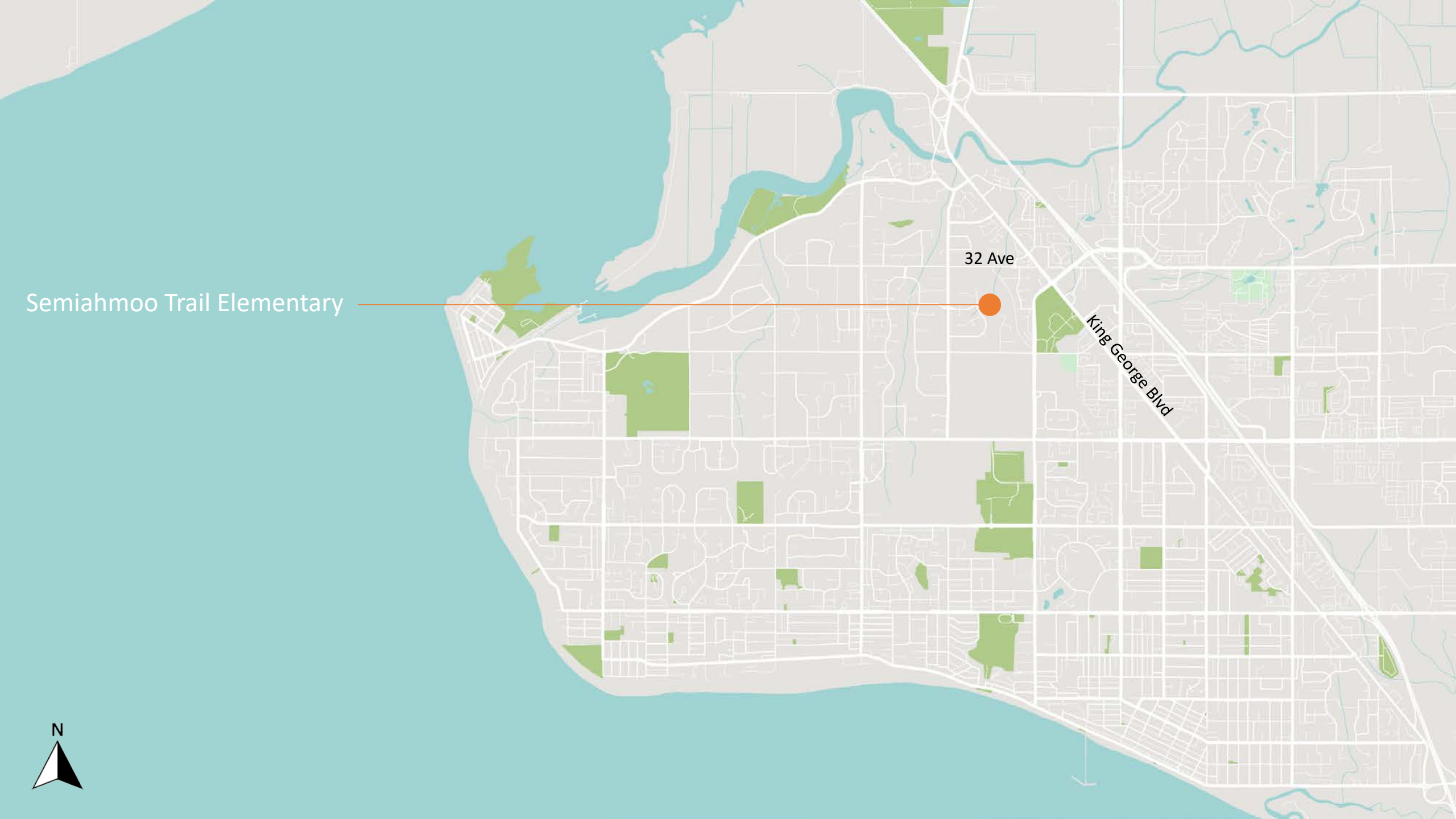
Construction Spring 2023- Fall 2024

Opening Fall 2024

Semiahmoo Trail Elementary

32 Ave

King George Blvd







Environmental Restrictions



Site Plan During Construction

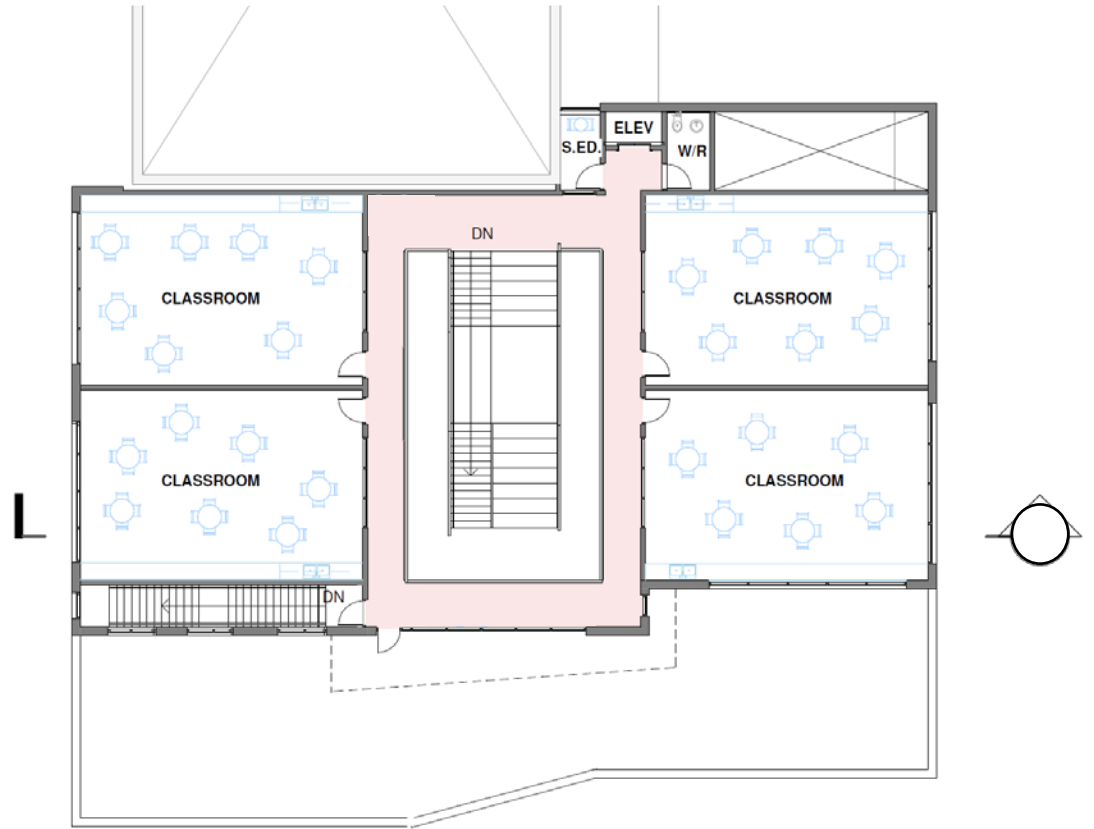


Site Plan After Construction





Ground Floor



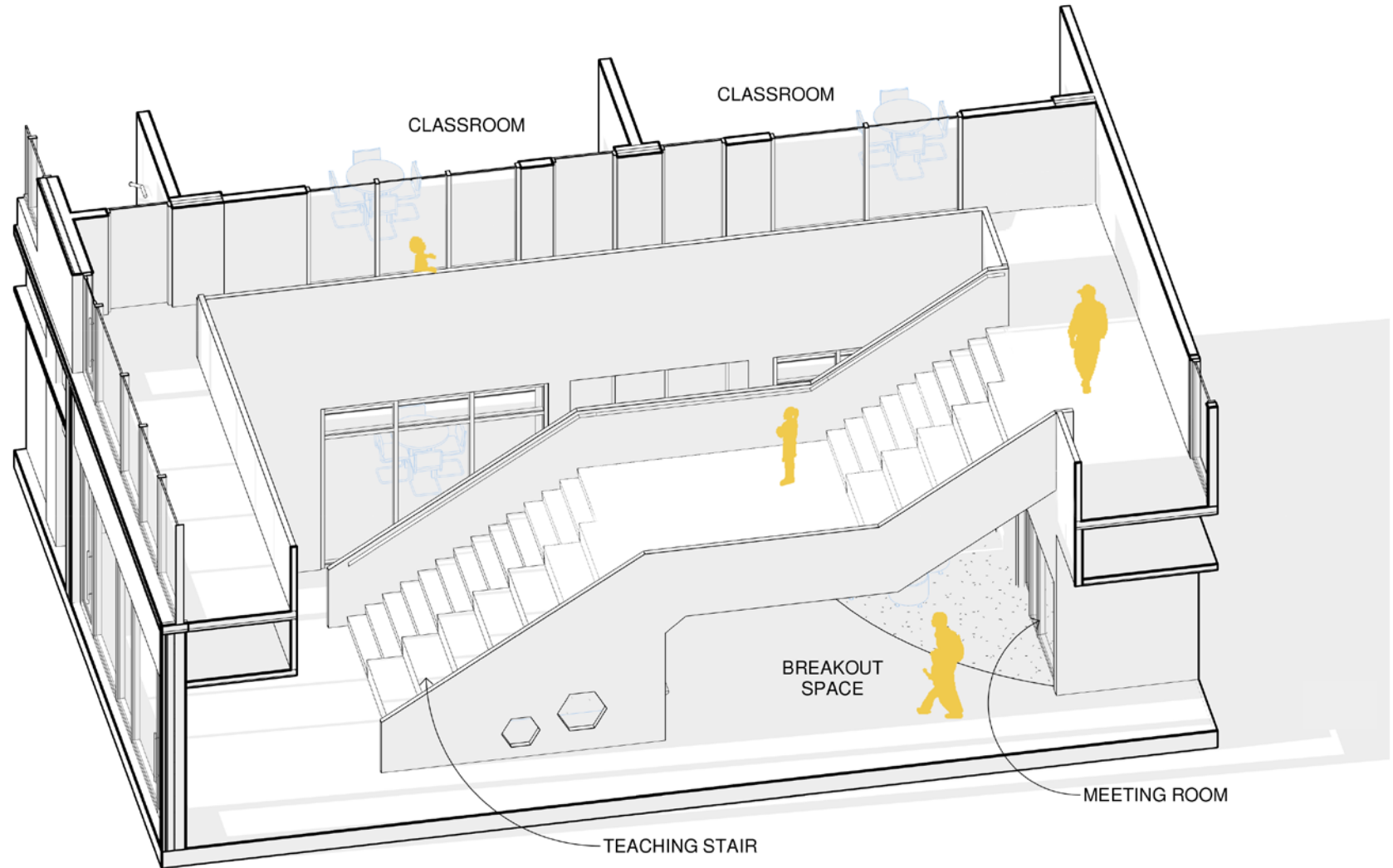
Second Floor



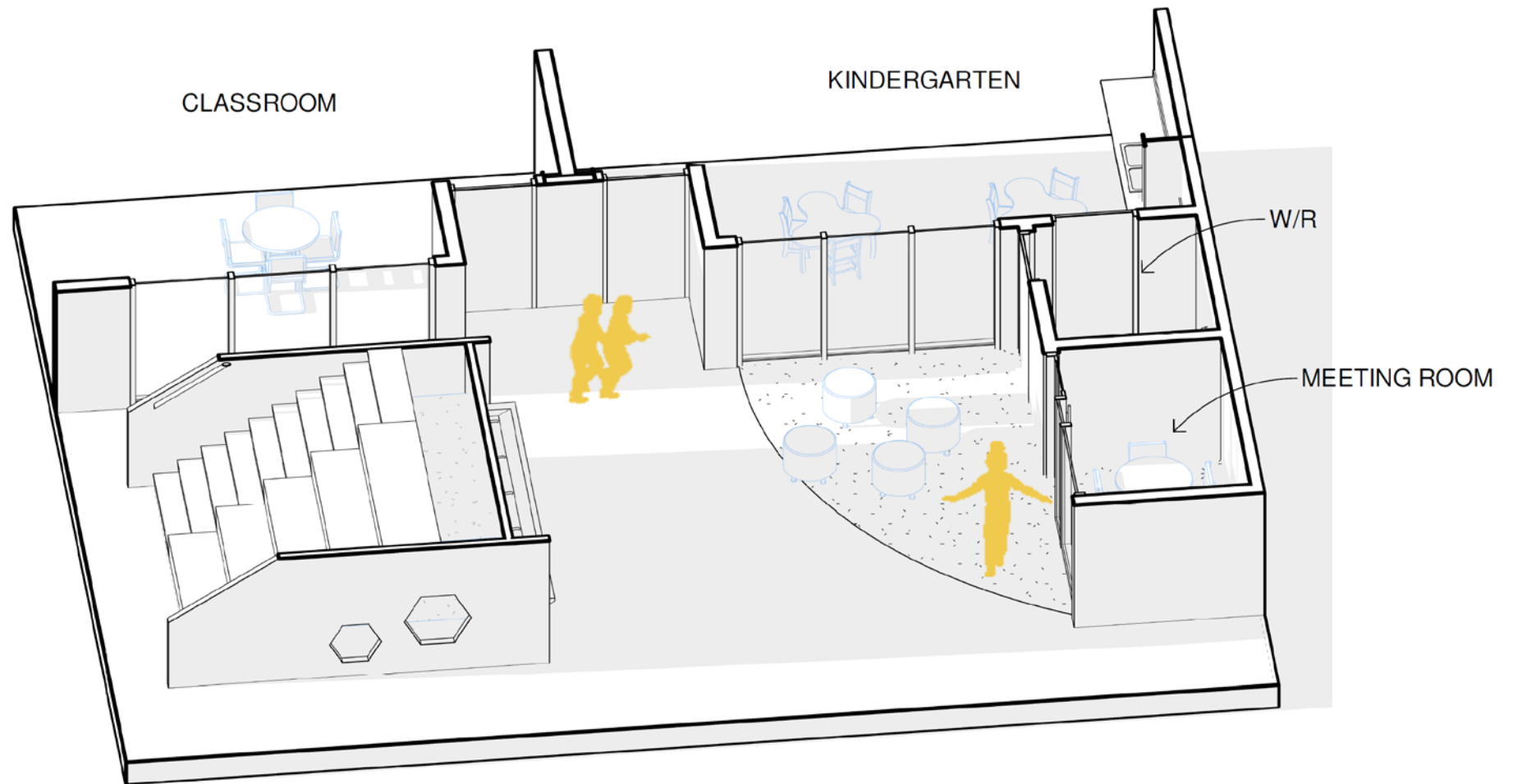


Section

Teaching Stair



Break Out Space





Concept Only

Thank You