
**Administrative Memorandum
Regular Board Meeting**

Date: November 17, 2021
Topic: Potential for Expansion of French Immersion in Grandview (South Surrey)
Submitted by: Dr. Jordan Tinney, Superintendent of Schools/CEO

Background:

Our Board of Education has been successful in advancing a substantial capital program in South Surrey, particularly in the area of Grandview and east of Highway 99. In particular, with the opening of Edgewood Elementary, Douglas Elementary and Grandview Heights Secondary, the Board has seen a major increase in the number of seats added to the region.

In addition to the recently opened new schools in this immediate area, the Board also has opened an addition at Pacific Heights Elementary, and we have additions underway at Sunnyside Elementary and Morgan Elementary. Finally, on the construction horizon is the new Ta'talu Elementary which will be near the corner of 20th Avenue and 165A Street.

Clearly, growth in this area is significant as our Capital Plan predicts. Edgewood Elementary was projected to open with 407 students and, as of September 30th, had 619 students. This major growth initiated a preliminary analysis of enrolment in the area. Our initial analysis has focused on Pacific Heights Elementary and Edgewood Elementary, and the movement of students. The maps below indicate, from the Pacific Heights Elementary perspective, where students come from, where they go to, and what the net cross boundary impact is on enrolment.

The largest contributor to Pacific Heights Elementary's enrolment, from another elementary school's catchment, is Edgewood Elementary, with 17 students who live in Edgewood Elementary's catchment attending Pacific Heights Elementary.

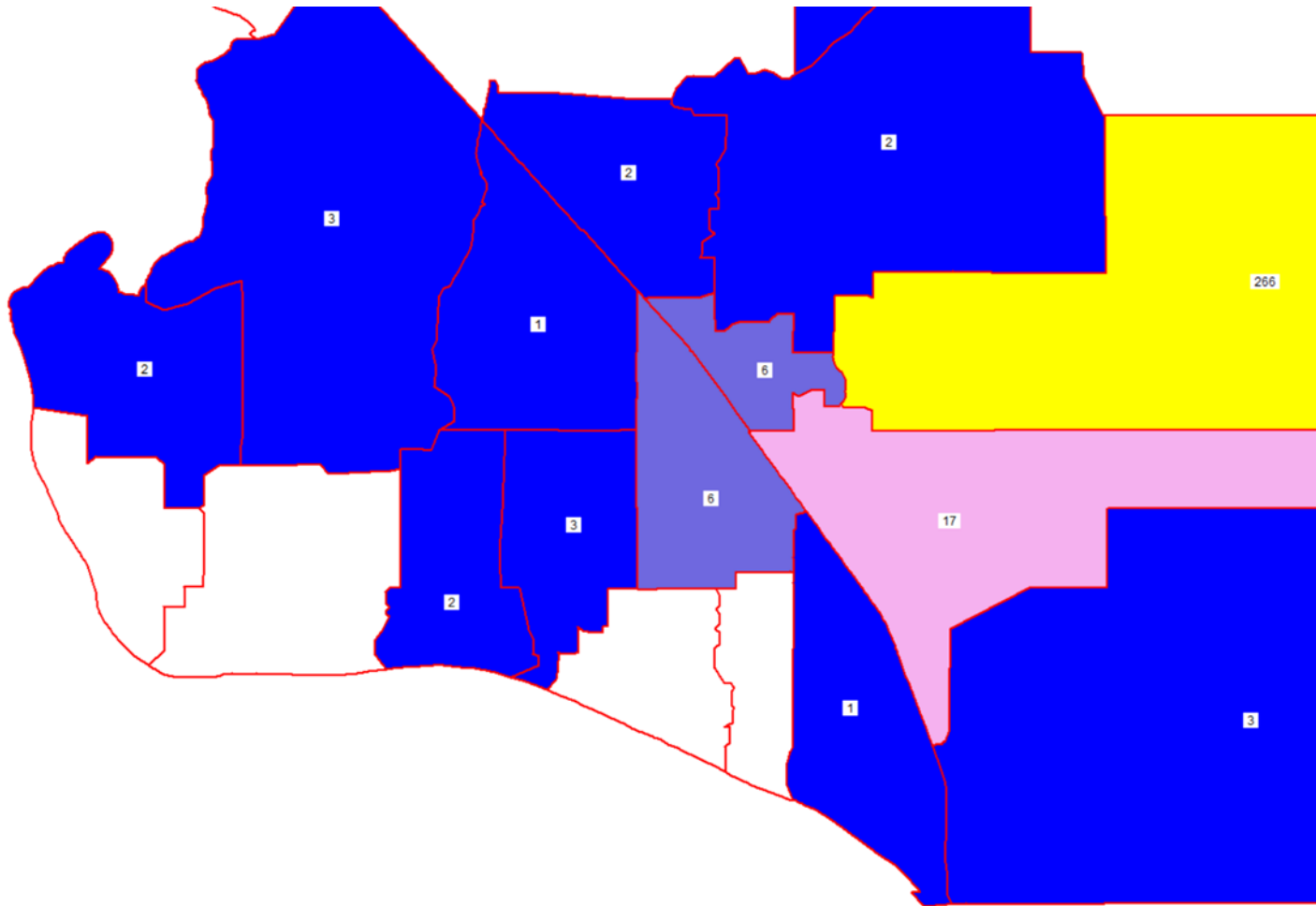
The largest loss from Pacific Heights Elementary is to Morgan Elementary where 29 students attend. Next greatest loss is to Sunnyside Elementary, with 13 students attending Sunnyside Elementary.

There will be inflow from other catchments as well and, in the end, Pacific Heights Elementary loses 27 students to Morgan Elementary, they lose seven students to Sunnyside Elementary, and they gain nine students from Edgewood Elementary.

Potential for Expansion of French Immersion in Grandview (South Surrey)

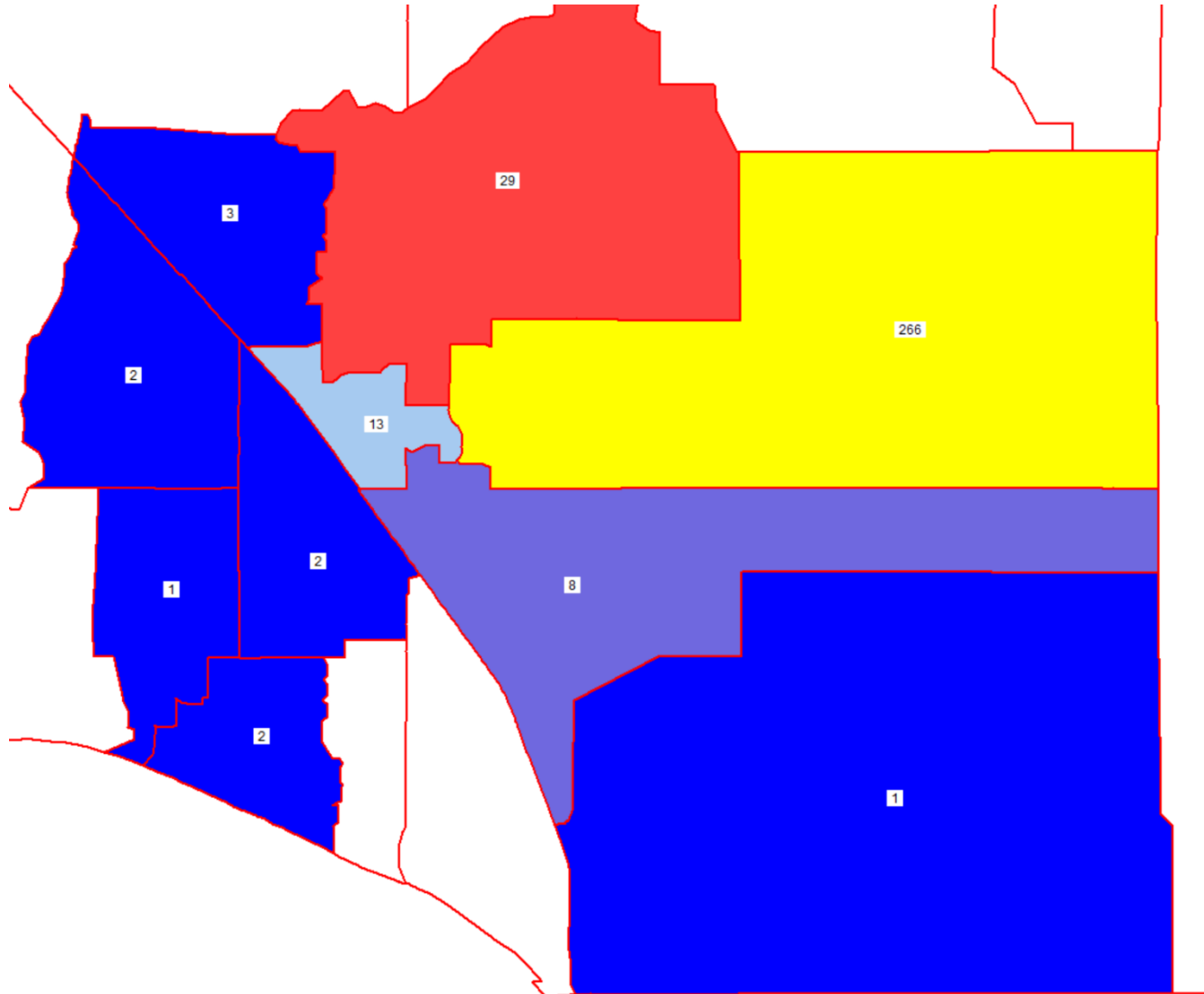
Context:

Map Types: Where students come from:



Potential for Expansion of French Immersion in Grandview (South Surrey)

Where students go:

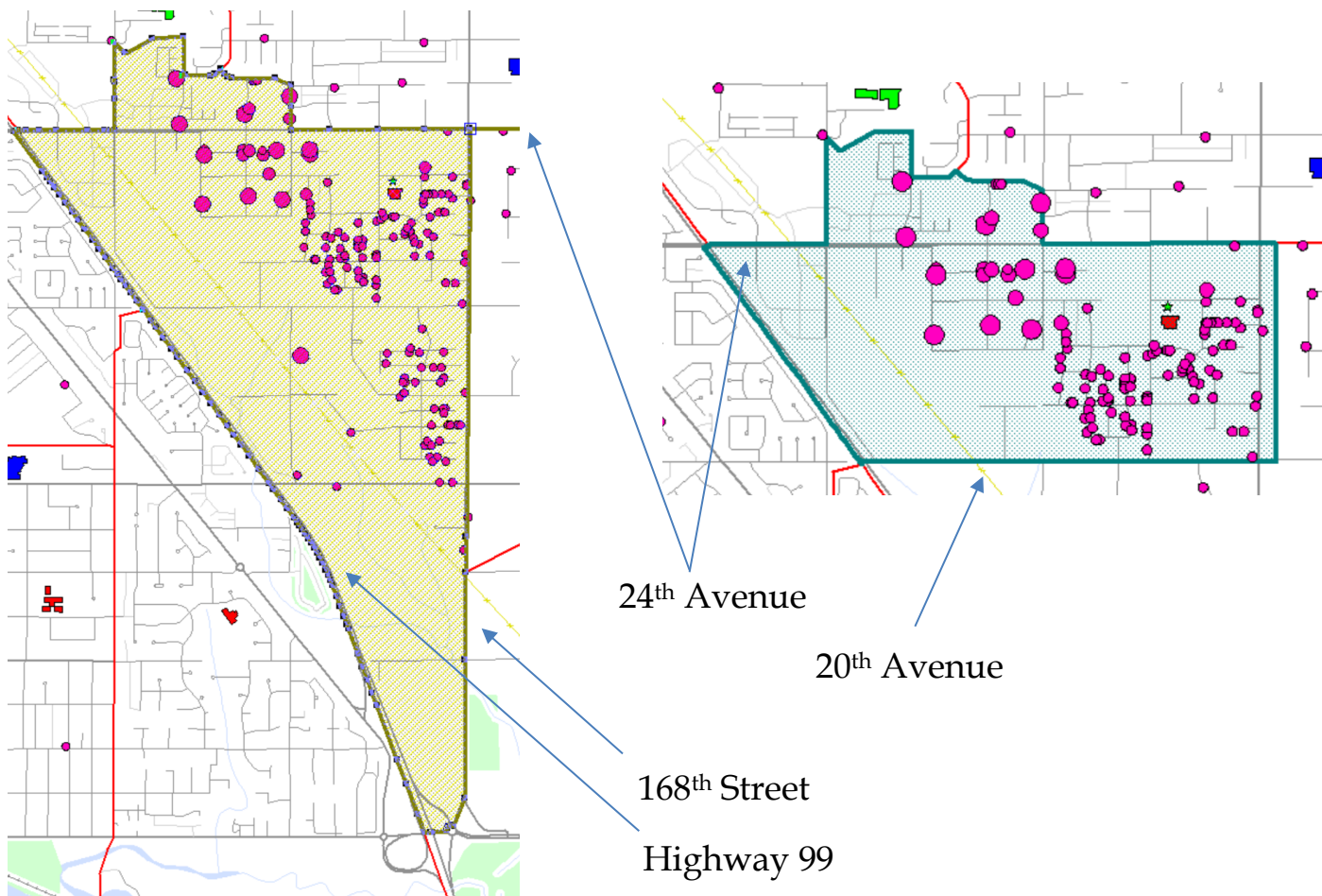


Potential for Expansion of French Immersion in Grandview (South Surrey)

Net: Ins vs outs

The opening of Edgewood Elementary has impacted the catchments of Pacific Heights Elementary, Sunnyside Elementary, and the new Douglas Elementary.

As stated earlier, Edgewood Elementary was projected to open with 407 students and currently has 619 enrolled. Of those 619, 511 of them live west of 168th Street and inside a pie shaped portion of the total Edgewood Elementary catchment. If we break this segment down even smaller, between 20th Avenue and 24th Avenue and between 168th Street and Highway 99, in that small portion alone, there are 435 students who attend Edgewood Elementary.



Growth in this area will continue and, as stated earlier, while we are concerned with the rapid growth at Edgewood Elementary, we feel we are well situated with the addition coming at Sunnyside Elementary and the new Ta'talu Elementary opening in September 2024. In addition to those two capital projects, we have other new schools that we hope to open at 17390 20th Avenue and at 17950 26th Avenue. The district has acquired the sites to build these two schools and these two projects, Sites 214 and 208 respectively, are currently numbers five and six on

Potential for Expansion of French Immersion in Grandview (South Surrey)

our Five Year Capital Plan. Number seven on our Five Year capital plan includes the potential to add a third elementary school either on the current Grandview Elementary site (17561 20th Avenue – Site 016), or at a nearby location to be determined. Regardless, for our elementary schools alone, we have opened 2 new schools (Edgewood Elementary and Douglas Elementary. We have four more (Ta'talu Elementary, Site 214, 208, and 016) new schools and we have just opened an addition at Pacific Heights Elementary, and have current additions going on at Sunnyside Elementary and Morgan Elementary. These projects will infuse substantial seats into the area.

Historically, due to our capacity issues, our Board has had to make difficult decisions regarding French Immersion which ultimately is a program of choice. They have had to weigh programs of choice versus enrolment for students in regular programs within catchment. In the broader Grandview area, with these additional seats, there is the potential to expand French Immersion. The potential comes with the numerous projects on the horizon and with our knowledge that an immersion program will ultimately draw from all schools east of Highway 99.

Staff was asked by the Board for their sense of the possibility of expansion of Early French Immersion. Through this report, staff believe that there is the capacity to expand immersion and would welcome a chance to explore further with more details including a final destination of a program. With the Board's support, we would return in December with a final analysis and details of opening. Currently, we believe a program could be started at Pacific Heights Elementary in September 2022 and a final destination could be determined by September 2024 to align with the opening of Ta'talu Elementary with immersion residing at one of these two schools who are in close proximity to each other and who both serve the populations east of Highway 99.

It is recommended:

THAT the Board of Education direct the Superintendent to provide further analysis on expanding Early French Immersion in the Grandview Heights area with a recommendation for placement at the December 2021 Regular meeting of the Board.
