

**BOARD OF EDUCATION
OF
SCHOOL DISTRICT NO. 36 (SURREY)**

**BYLAW #335, RE: JESSIE LEE ELEMENTARY (SITE 089)
RESTRICTIVE COVENANT
ANNUAL FLUSHING
(JESSIE LEE CHILDCARE FACILITY)**

THAT the Board grant a Restrictive Covenant, in favour of the City of Surrey, for annual flushing of on-site sanitary mains and the sanitary service connection associated with the buildings on 2124 and 2128 – 154 Street located on the property of Jessie Lee Elementary (Site 089), legally described as PID: 014-364-140, Lot A, Section 14, Township 1, Plan NWP 11601, New Westminster District.

THAT the Board's signing officers execute the Restrictive Covenants: Land Title Act S.219 agreement.

The installation of the works will have no adverse effect on the use of the site by the School District; or the District's our ability to dispose of the site in the future.

READ A FIRST TIME THE 15TH DAY OF SEPTEMBER, 2021.

READ A SECOND TIME THE 15TH DAY OF SEPTEMBER, 2021.

READ A THIRD TIME, PASSED AND ADOPTED THE 15TH DAY OF SEPTEMBER, 2021.

Seal

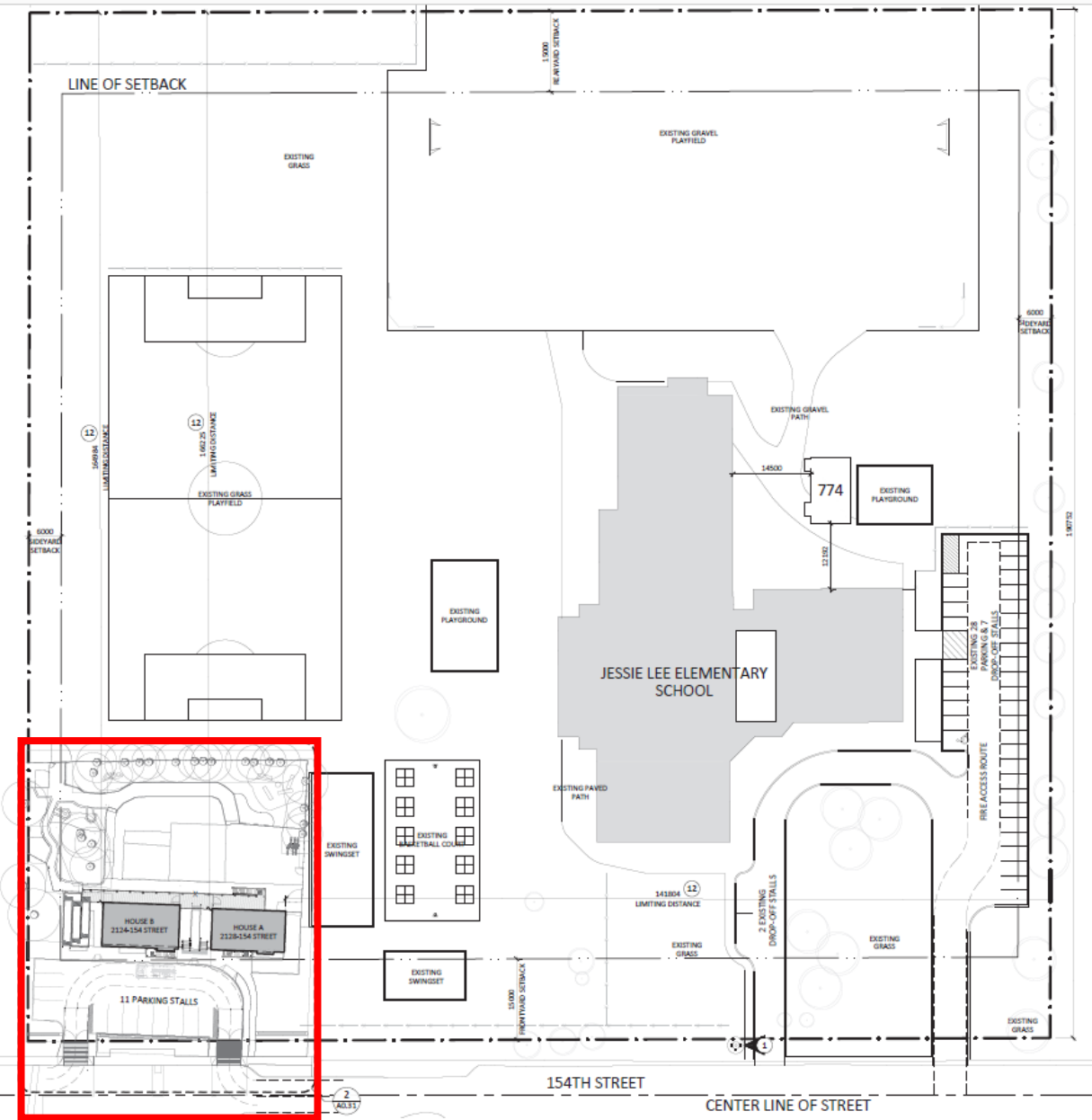
Chairperson of the Board

Secretary-Treasurer

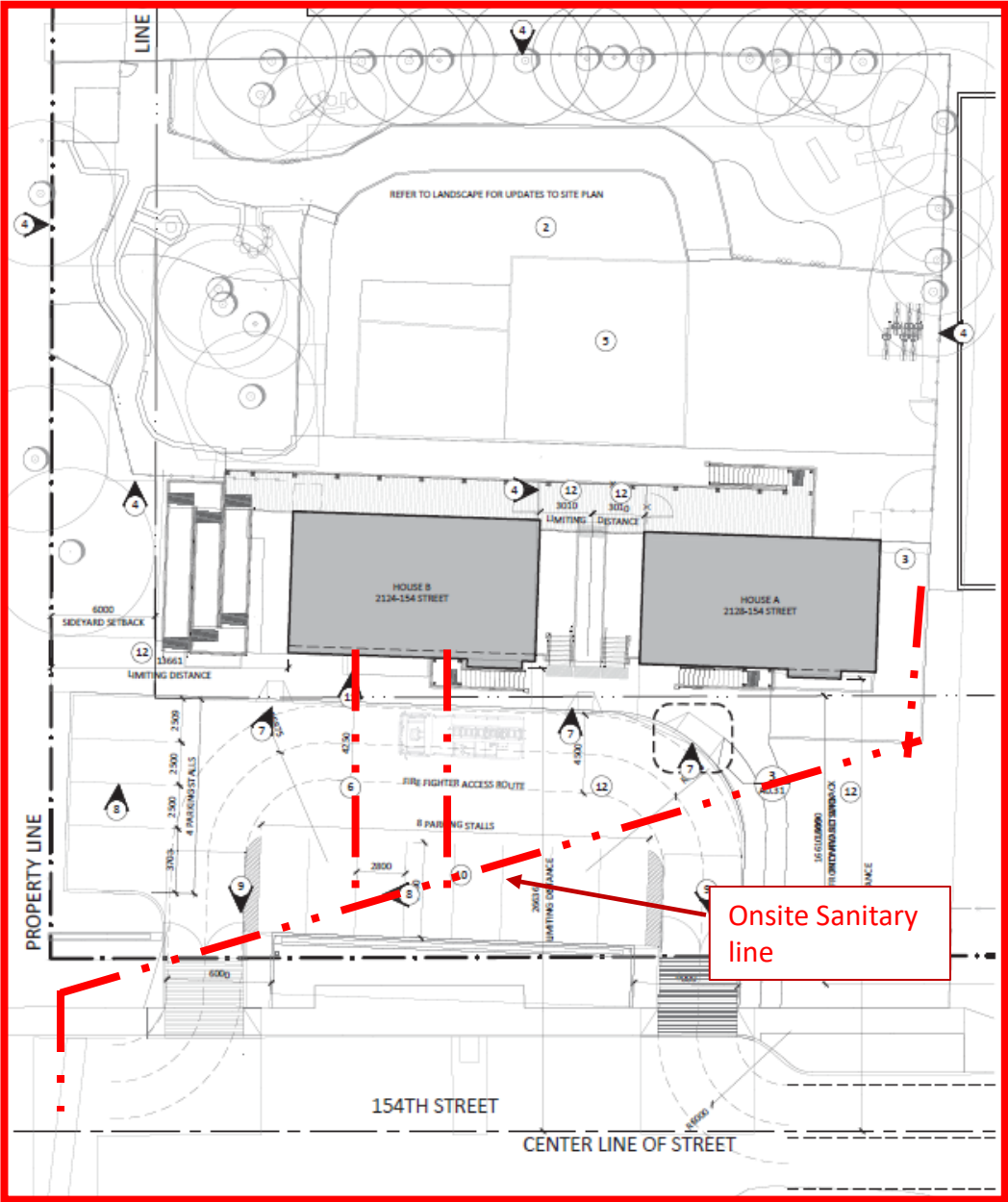
I HEREBY CERTIFY this to be a true and original of School District No. 36 (Surrey) Bylaw #335, Re: Jessie Lee Elementary (Site 089) Restrictive Covenant – Annual Flushing (Jessie Lee Childcare Facility) adopted by the Board the 15th day of September, 2021.

Secretary-Treasurer

/dg



Overall Jessie Lee Elementary + Childcare Site Plan



Enlarged Childcare Site Plan