



# KB Woodward Elementary Addition

School District No. 36

Board of Education Sketch Plan Presentation

**KIMBA** | ARCHITECTS  
PLANNERS

November 18, 2020  
7:00pm

# Today's Agenda

- 1 Project Team**
- 2 Site Context**
- 3 Existing Conditions**
- 4 Program**
- 5 Site Plan**
- 6 Floor Plans / Landscape Concept**
- 7 3D Views**
- 8 Project Schedule**

*We thank you for the opportunity to present to you today*



# Project Team

<b>SD36 Project Manager</b>	<i>Wendy Crowe</i>
<b>Steering Committee</b>	<i>Neder Dhillon – Assistant Superintendent Gregory Hopps – Principal Jolene Elder – Vice Principal</i>
<b>Architects</b>	<i>KMBR Architects Planners Inc.</i>
<b>Structural Engineers</b>	<i>Bush, Bohlman &amp; Partners LLP</i>
<b>Mechanical Engineers</b>	<i>Rocky Point Engineering Ltd.</i>
<b>Electrical Engineers</b>	<i>Jarvis Engineering</i>
<b>Civil Engineers</b>	<i>R.F. Binnie &amp; Associates Ltd.</i>
<b>Landscape Architects</b>	<i>Prospect &amp; Refuge</i>
<b>Code Consulting</b>	<i>Eriksberg Engineering</i>

## KMBR ARCHITECTS



**BASSEM TAWFIK**  
Principal



**GEORGIA FISHER**  
Project Manager



# Site Context





# Site Context





# Existing Conditions





# Existing Conditions

Front Entrance



North Wing



East Wing

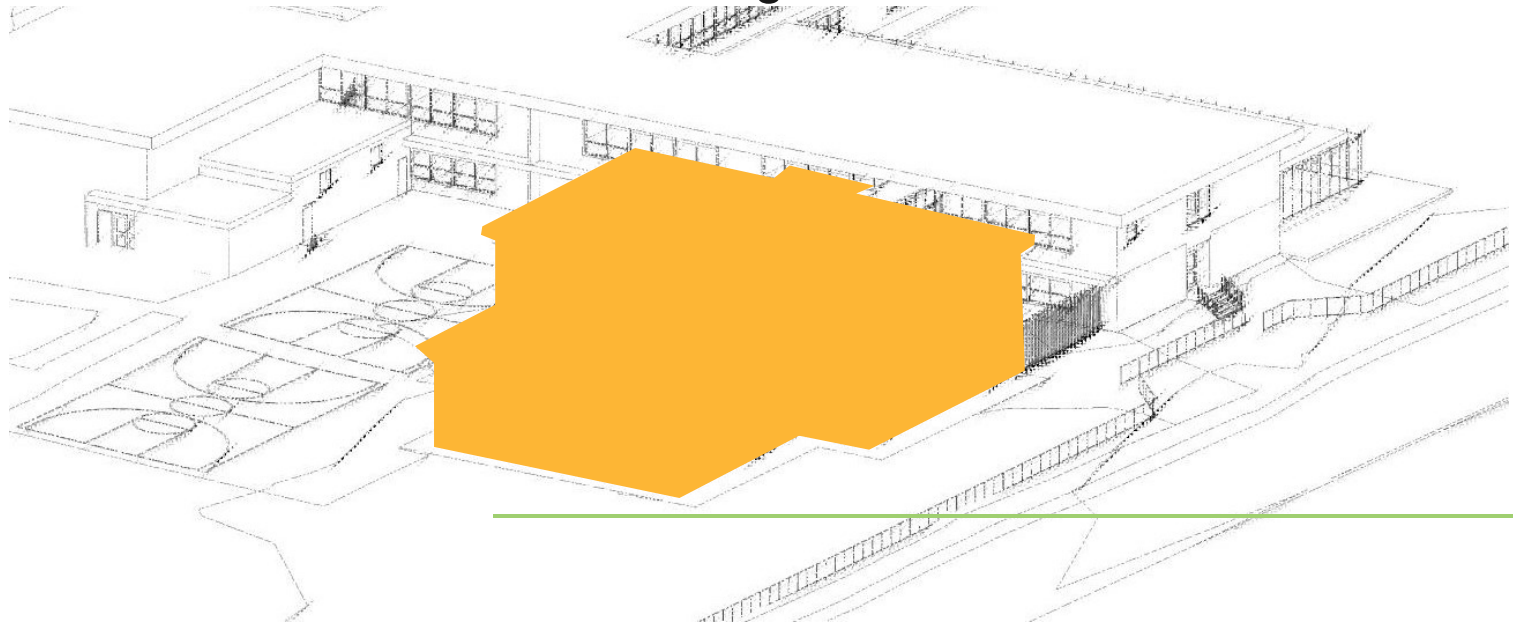


East Entrance



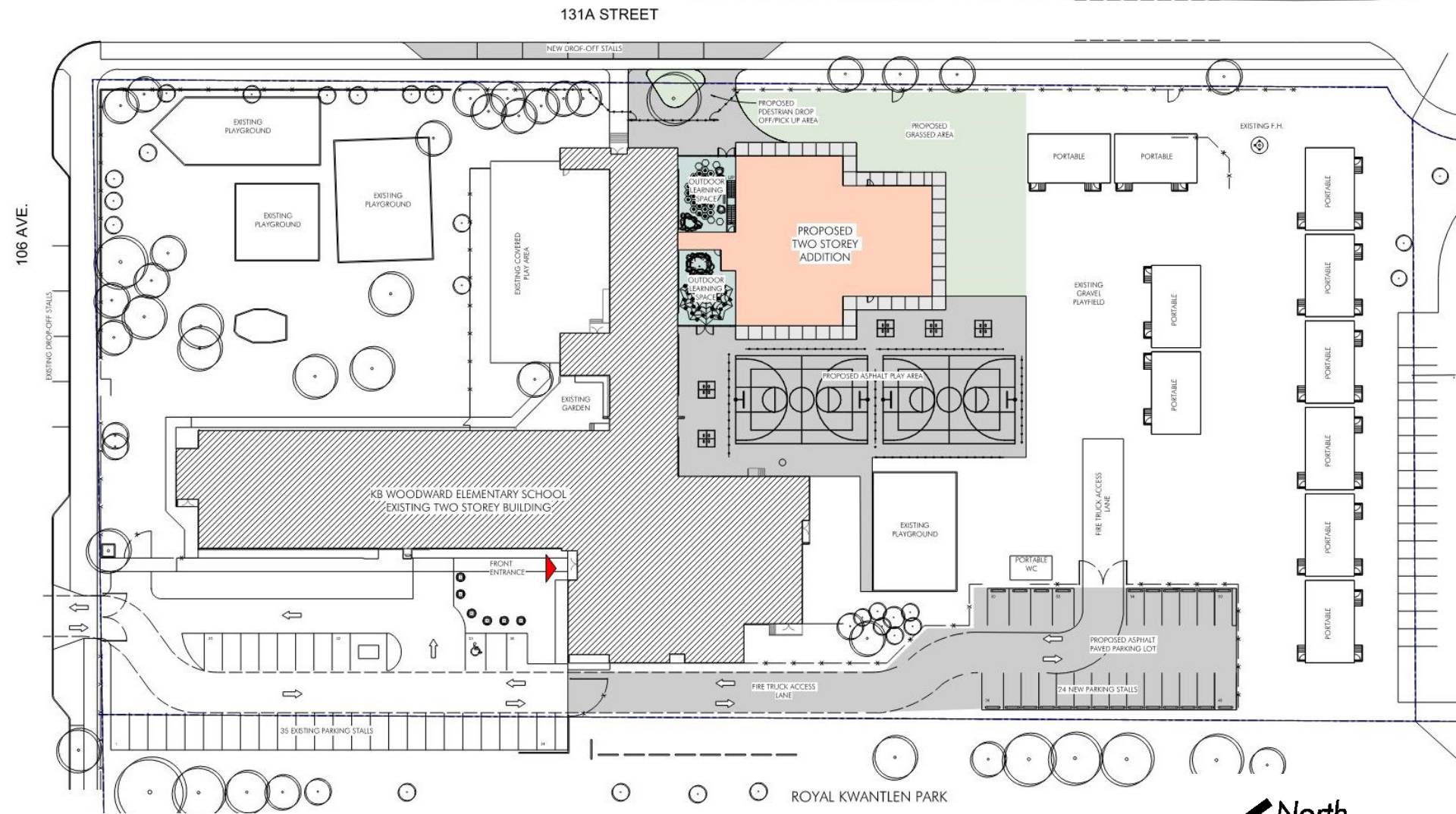
# Addition Program:

- 8 Classrooms
- 4 Break-Out Rooms
- 2 Collaborations Spaces
- Multi-Purpose Room (divided with an operable wall for flexibility)
- Elevator and Service Spaces
- Addition of two new KG washrooms in existing KG classrooms adjacent to addition
- Addition of two new KG washrooms in North Wing KG classrooms

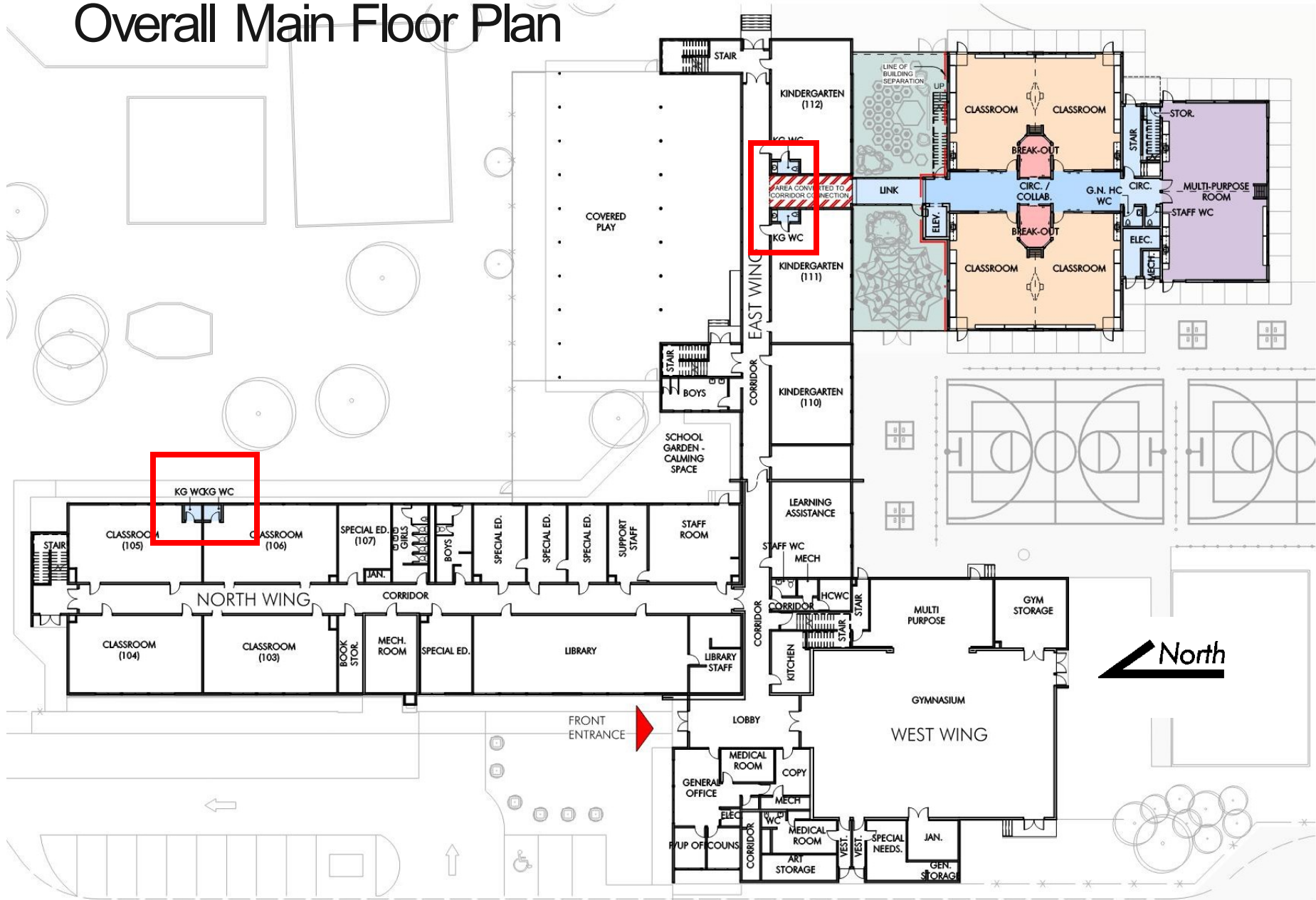




# Site Plan

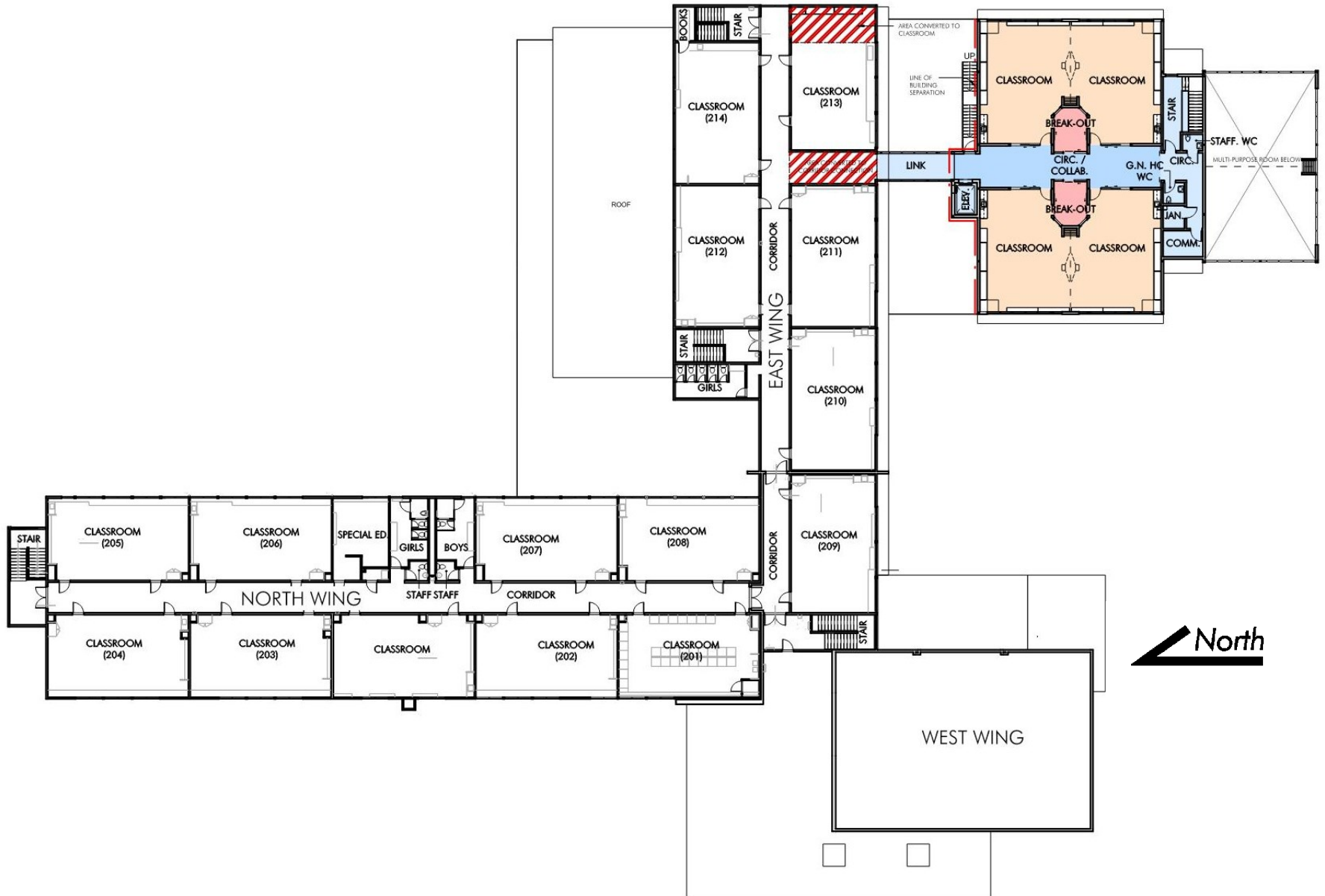


# Overall Main Floor Plan

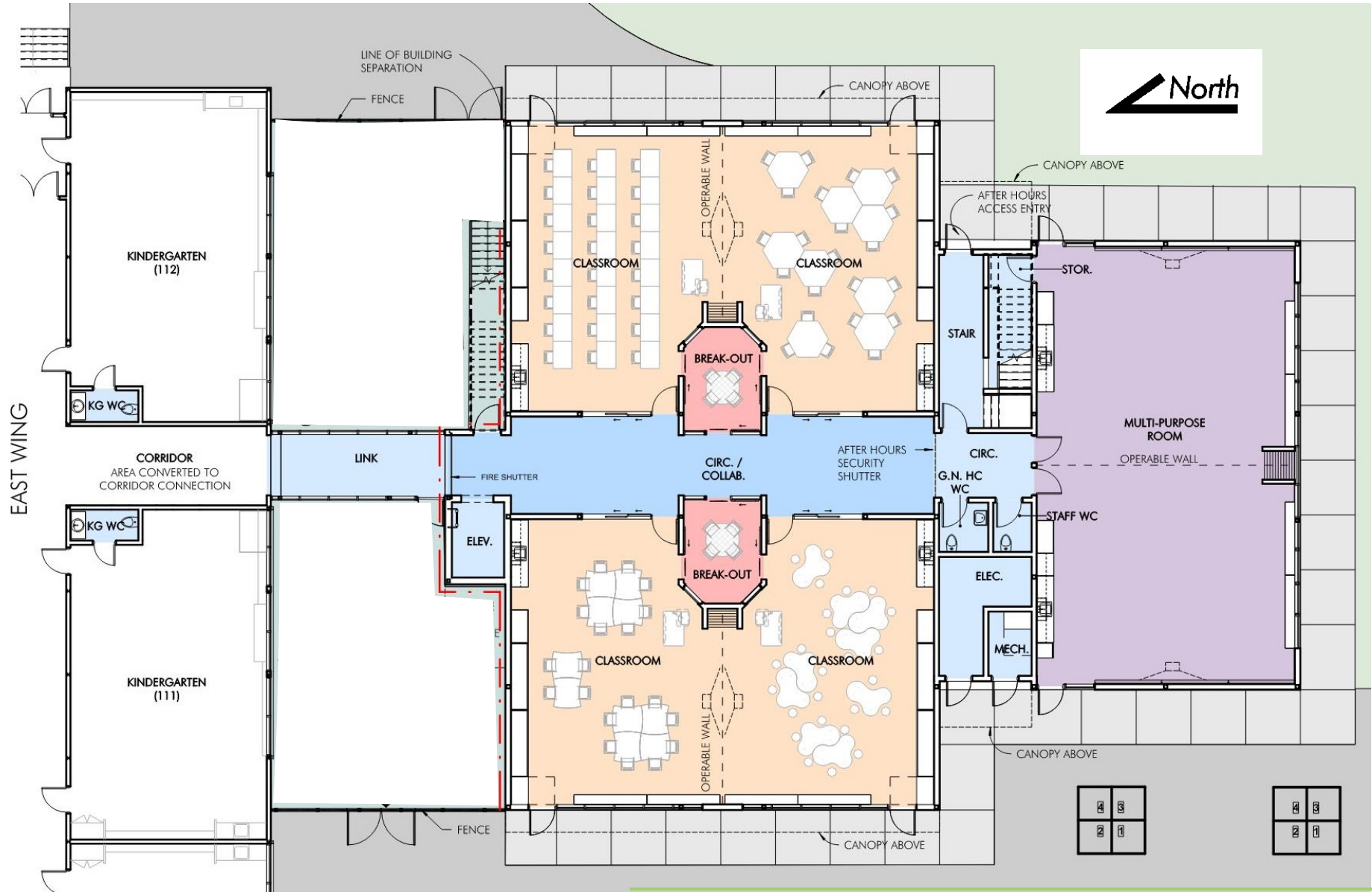




# Overall Second Floor Plan

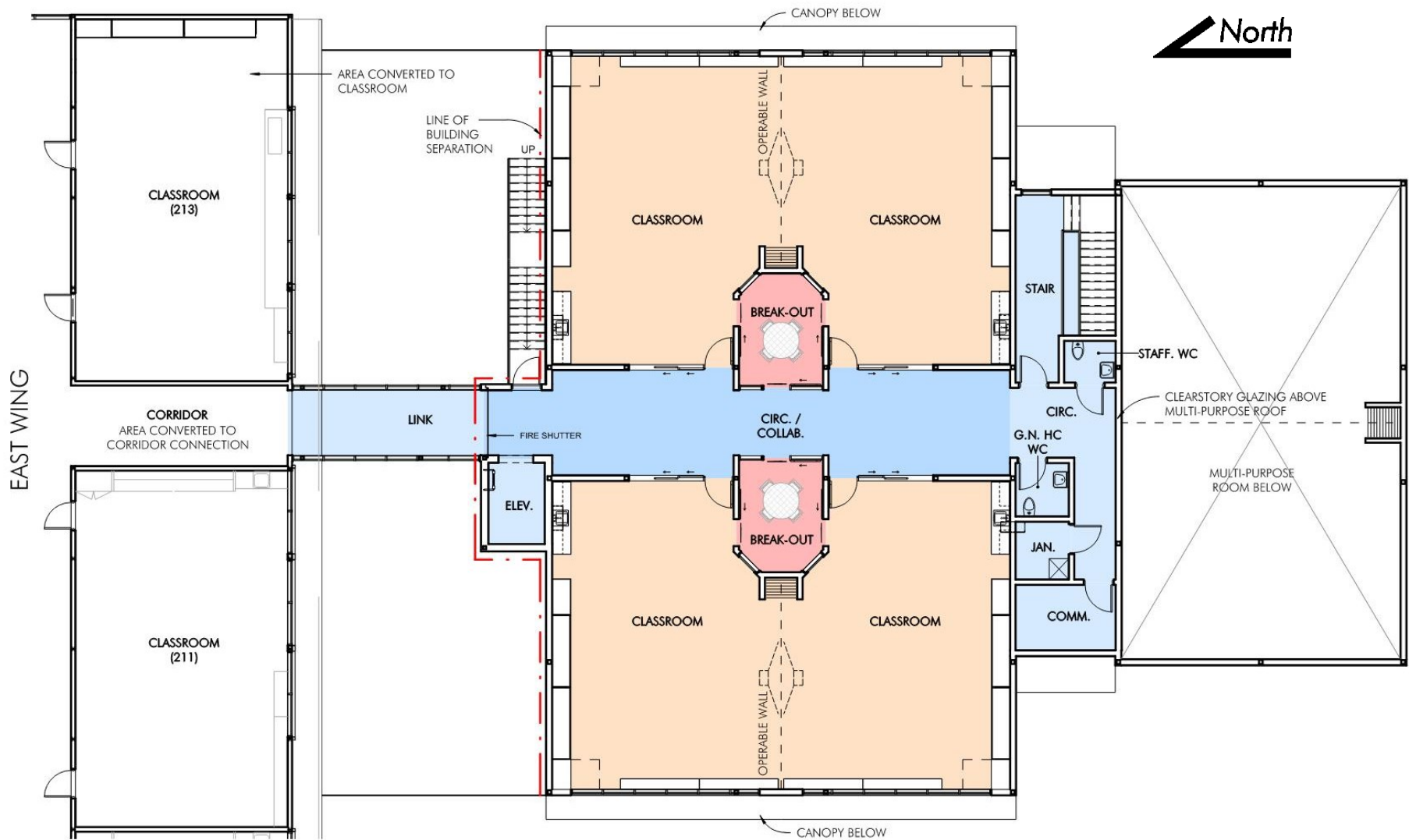


# Main Floor Plan Addition

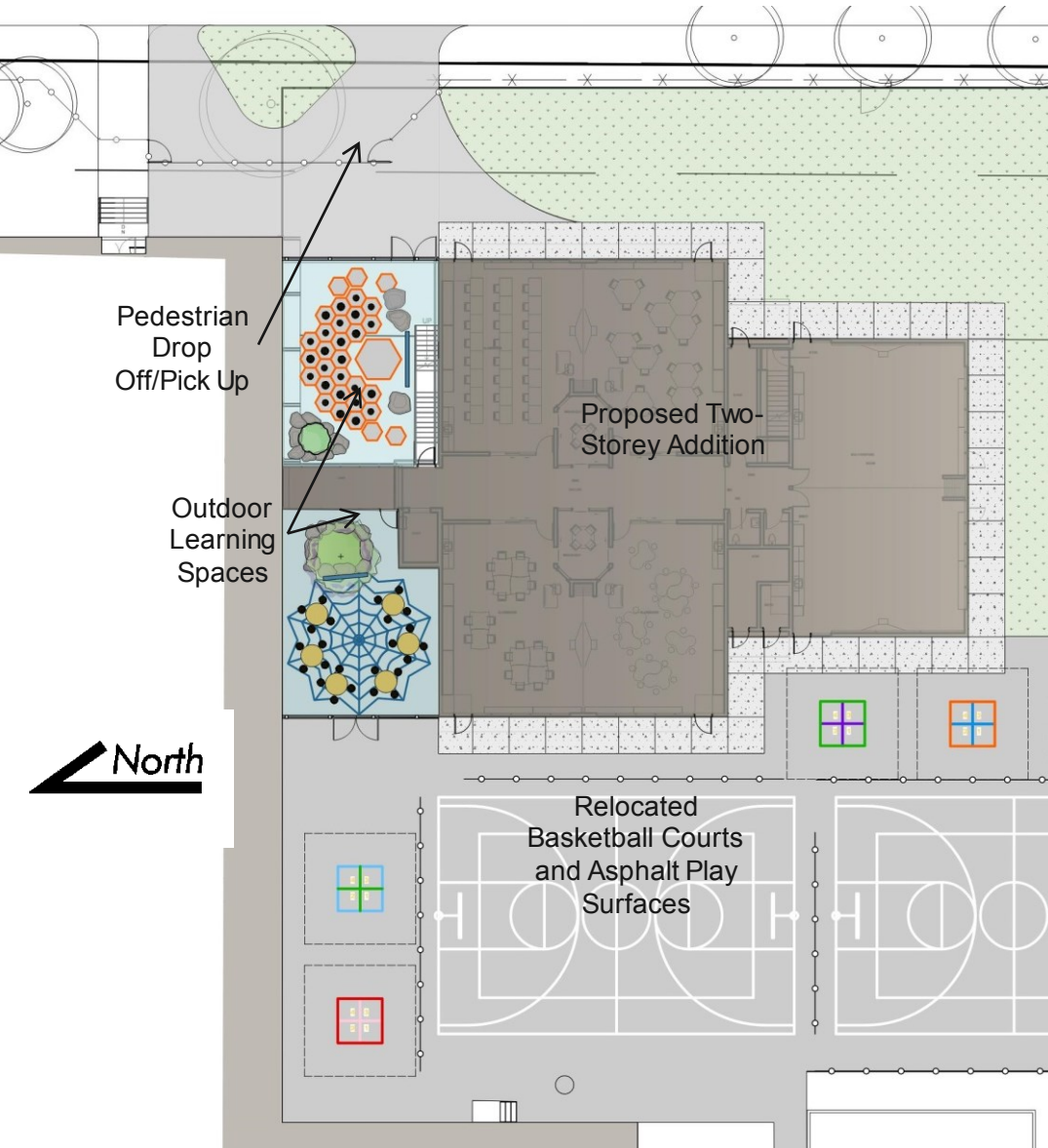




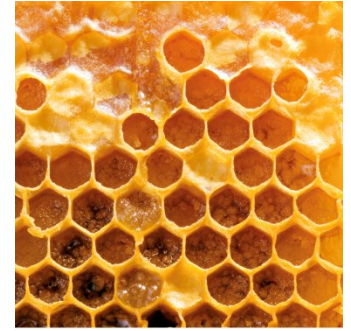
# Second Floor Plan Addition



# Landscape Concept



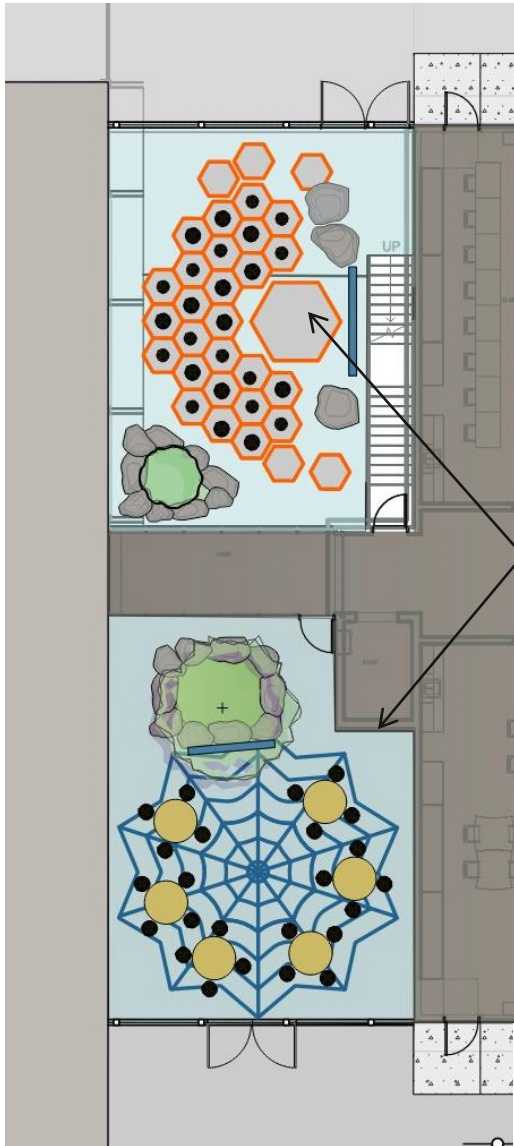
Patterns inspired by fractals in nature.



Natural outdoor seating



# Landscape Concept



Planting opportunities in courtyards designed to inject nature into spaces while providing seating opportunities



Secure fence



Outdoor Learning Spaces



Provide weather proof teaching tool and opportunities for outdoor art and learning



# East Facade





# West Facade





# South-West View





# North-East View



# Project Schedule

KB Woodward Elementary Addition Schedule	2020												2021												2022												2023		
	J	F	M	A	M	J	J	A	S	O	N	D	J	F	M	A	M	J	J	A	S	O	N	D	J	F	M	A	M	J	J	A	S	O	N	D	J	F	
Project Approval																																							
Schematic Design																																							
Design Committee Meetings																																							
SD36 Review and Sign Off																																							
Design Development																																							
Consultant Team																																							
Design Committee Meetings																																							
DD Costing Review																																							
VE Meeting																																							
SD36 Review and Sign Off																																							
Working Drawings																																							
Consultant Team Bi-Weekly Meetings																																							
Design Committee Meetings																																							
50% Costing Review																																							
95% Costing Review																																							
VE Meeting																																							
CofR - Building Permit Application																																							
Tender																																							
Construction																																							
Furniture and Equipment																																							
Occupancy																																							