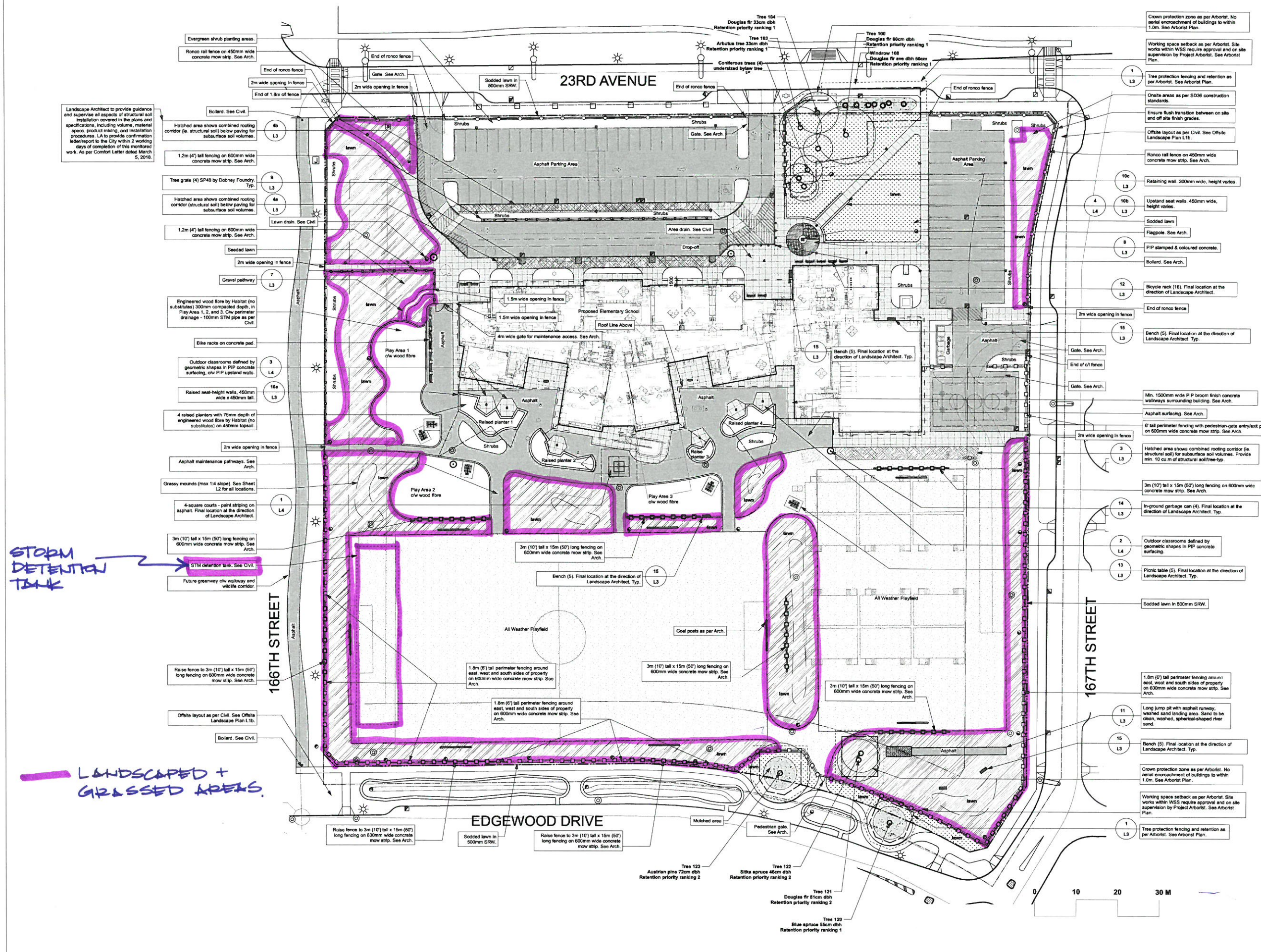


Edgewood Drive Elementary (Site 206) Restrictive Covenant - Detention and Sustainable Drainage



**LANDSCAPE DRAWINGS:**

- L1a Site Plan
- L1b Offsite Plan (Overall)
- L1c Offsite Plan (Partial)
- L2a Site Fencing Plan
- L2b Onsite Planting Plan - Trees
- L2c Onsite Planting Plan - Shrubs
- L3 Details - Various
- L4 Details - Dimension & Grading Plan
- L5 Details - Entry Wall

**Revisions:**

Nov 13, 2018	Issue for Review prior to tender
Nov 02, 2018	Re-issue for City Landscape Review
Oct 23, 2018	Re-issue for City Landscape Review
Jun 29, 2018	Re-issue for City Review (Offsites)
Jun 15, 2018	Reissue for BP
May 29, 2018	Issue for City Review (Offsites)
May 04, 2018	Addendum L-1
Apr 11, 2018	Issue for Tender (90%)
Mar 29, 2018	Issue for Coordination
Feb 26, 2018	Issue for BP
Feb 22, 2018	For COS Parks Department Review
Feb 13, 2018	For SD36 Review
Feb 01, 2018	For Client Review
Jan 24, 2018	For COS Review (L0 Tree Retention)
Jan 17, 2018	For SD36 Review
Jan 15, 2018	For Client Review
Jan 11, 2018	For Client Review
Jan 10, 2018	For Client Review
Jan 09, 2018	For Arborist Review (L-1)
Dec 14, 2017	For Client Review
Nov 15, 2017	For Client Review

**Jonathan Losee Ltd.**  
Landscape Architecture  
#102 - 1661 W 2nd Ave  
Vancouver, B.C. V6J 1H3  
Ph: 604-669-1003  
E-mail: info@jonathanlosee.com

Project:  
**SITE 206 - 16666 23 AVE  
ELEMENTARY SCHOOL**  
School District No. 36, Surrey, BC  
Surrey Eng. Ref#7817-0574-00

Sheet Title:  
**Landscape Site Plan**

Scale: 1:400  
Date: November 2017  
Project No:  
2017-54

**L-1a**