



FROST ROAD ELEMENTARY SCHOOL ADDITION SCHEMATIC DESIGN

8606 - 162 STREET, SURREY, BC
PRESENTATION TO THE SCHOOL BOARD
OCTOBER 17, 2018



>> 200 - 1014 Homer Street, Vancouver
British Columbia, Canada V6B 2W9

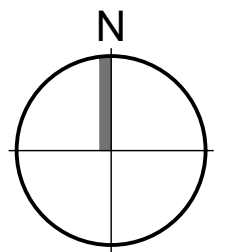
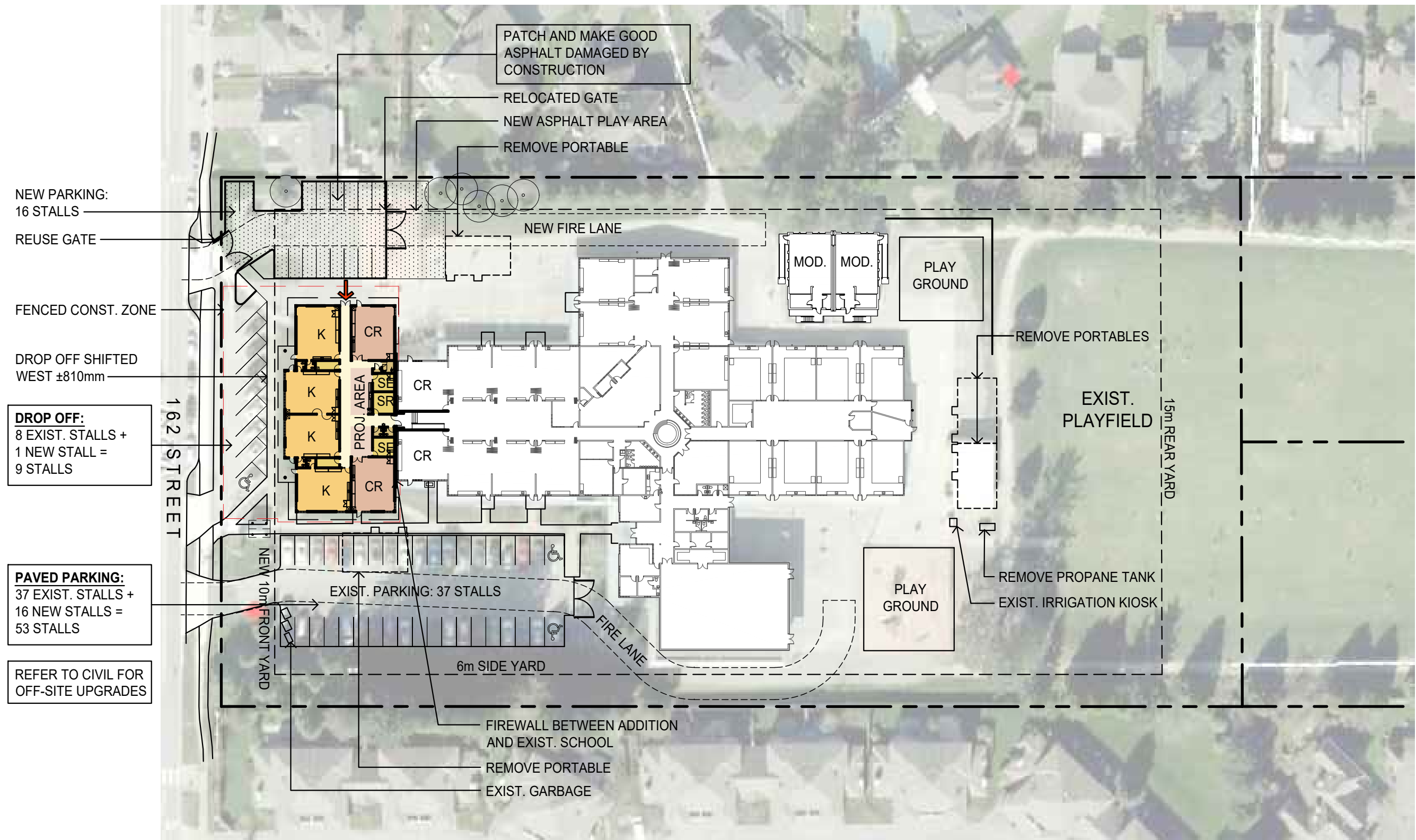
T 604 685 6312
F 604 685 0988
www.da-architects.ca



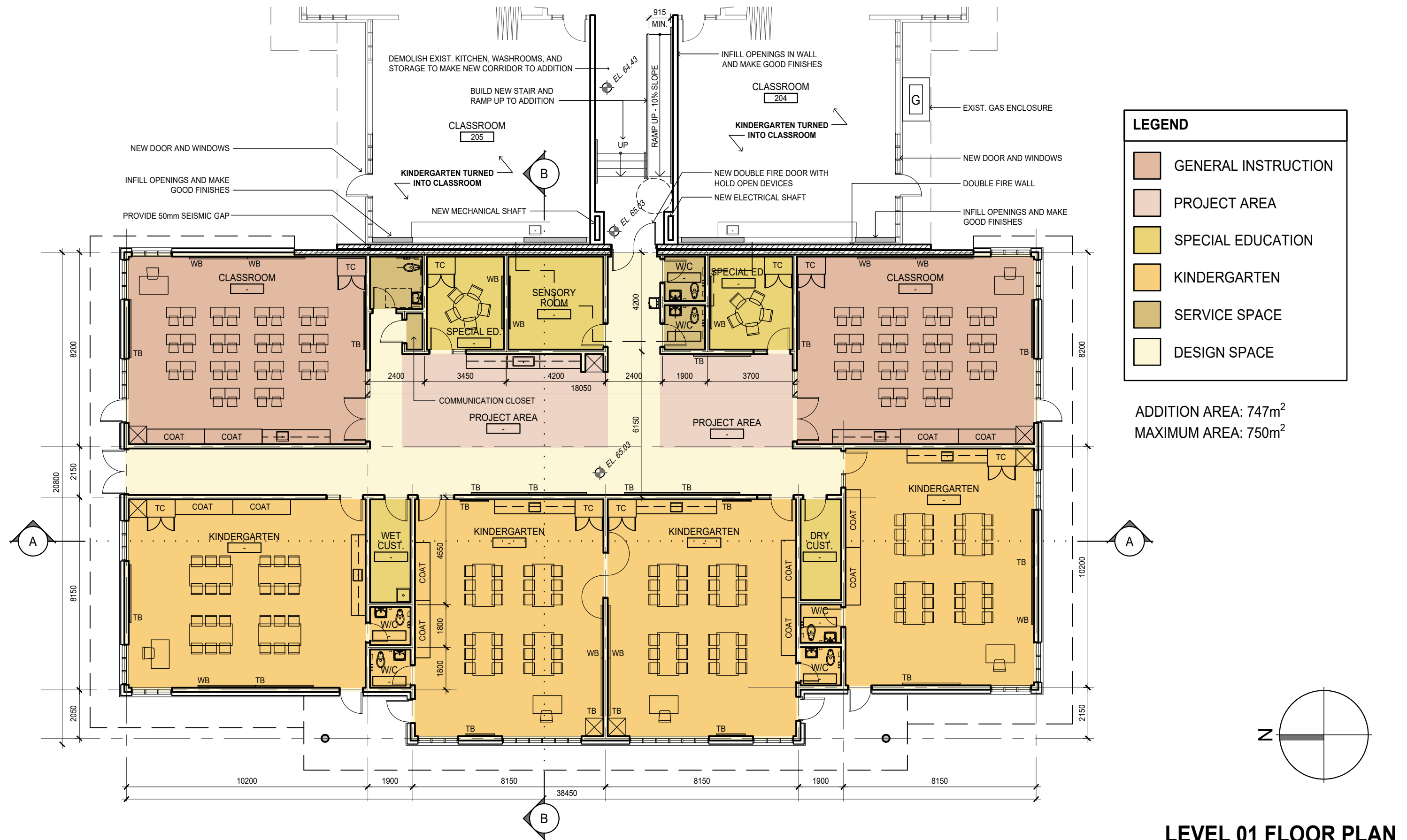
>> 14033 92 Avenue
Surrey, B.C. Canada V3V 0B7
604 596 7733

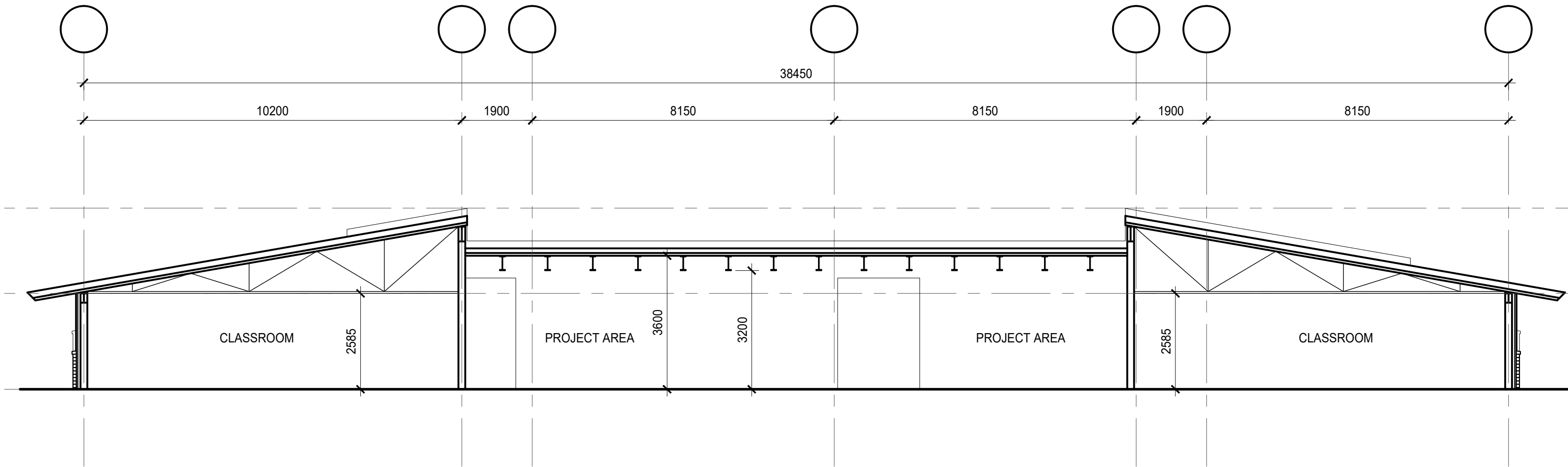


EXISTING SITE PLAN
FROST ROAD ELEMENTARY SCHOOL ADDITION
 1:750 2018.10.11

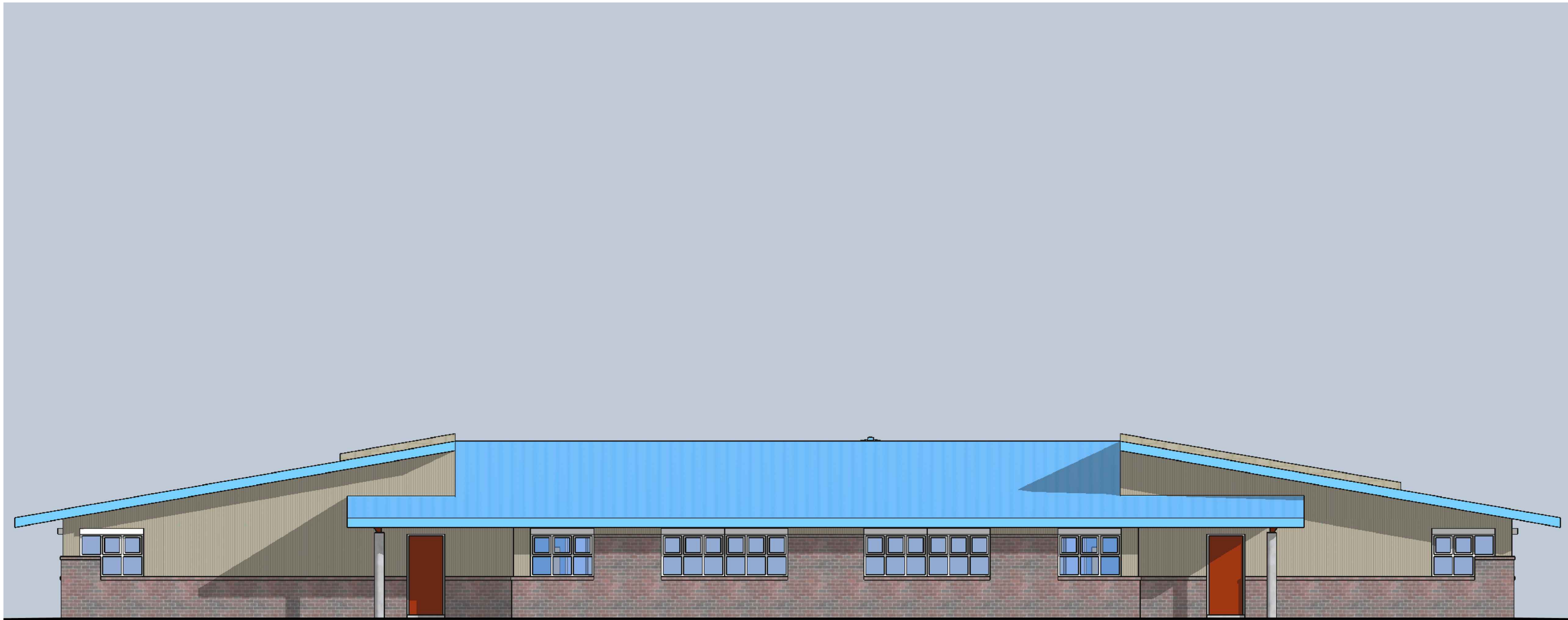


SITE PLAN
FROST ROAD ELEMENTARY SCHOOL ADDITION
 1:750 2018.10.11

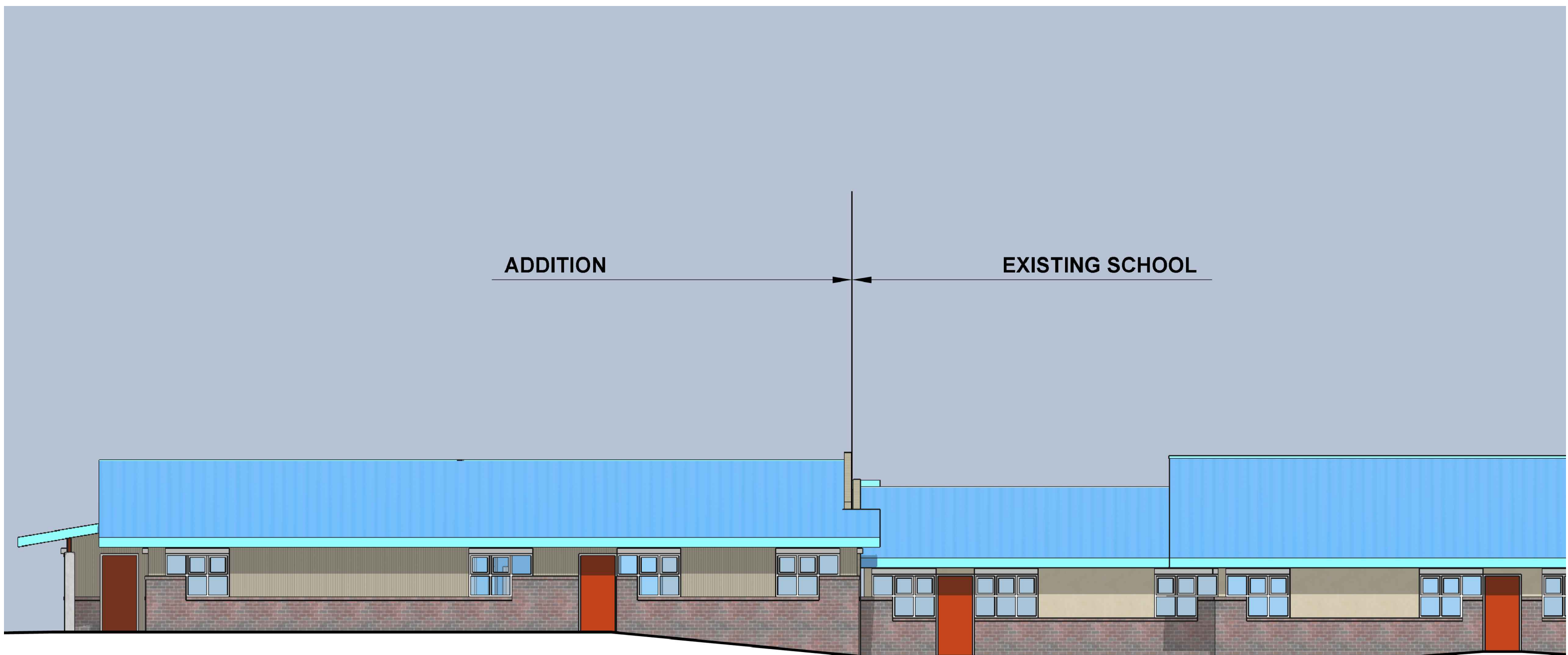




BUILDING SECTION A
FROST ROAD ELEMENTARY SCHOOL ADDITION
 1:100 2018.10.11



SOUTH ELEVATION
FROST ROAD ELEMENTARY SCHOOL ADDITION
1:100 2018.10.11



WEST ELEVATION
FROST ROAD ELEMENTARY SCHOOL ADDITION
 1:100 2018.10.11



