



FARM to SCHOOL^{BC}

Surrey School District

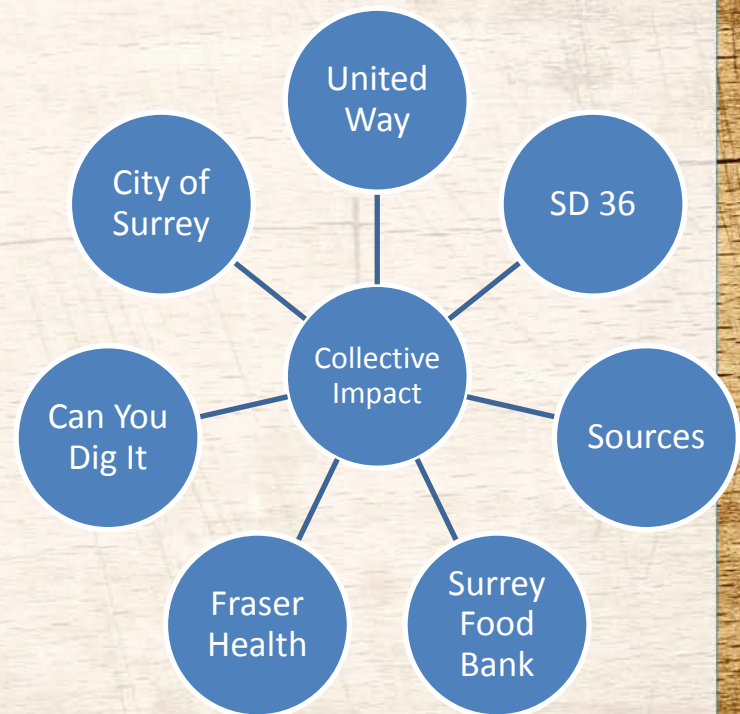
June 20, 2018



WHO ARE WE?



Food Access/Capacity Building/Food
Policy/System Redesign



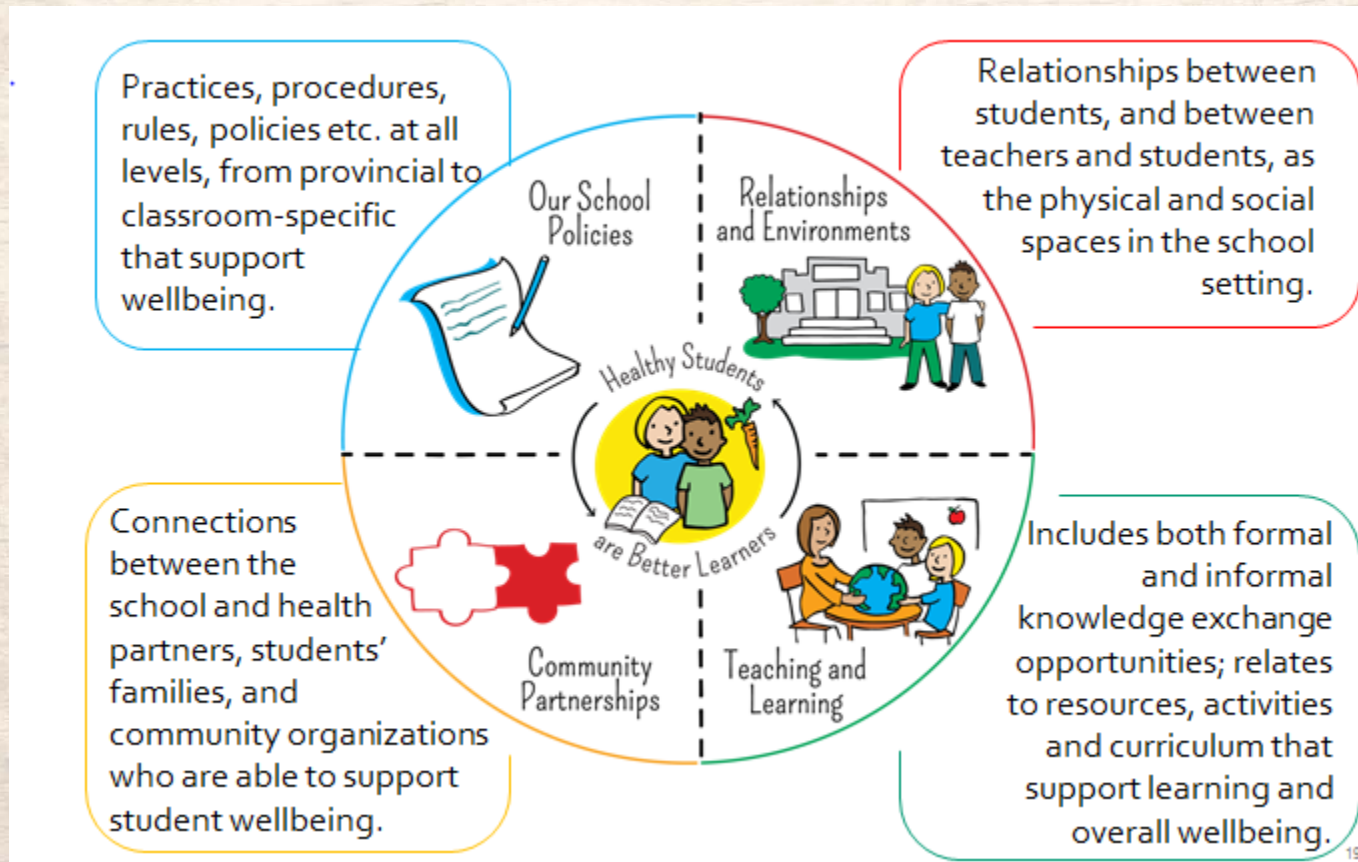
WHAT IMPACT DO WE WANT TO HAVE?



| AVAILABILITY | ACCESS | INCOME | FOOD LITERACY |
|---|--|---|---|
| <p>There are sufficient quantities of healthy food available on a consistent basis.</p> | <p>Distribution points for healthy food can be easily accessed by everyone in the community.</p> | <p>People have sufficient resources to obtain appropriate food for a nutritious diet.</p> | <p>People are aware of how to access, prepare, grow and preserve healthy, culturally appropriate food</p> |
|  |  |  |  |

Photo credit: DIVERSECity CRS

FOOD LITERACY WITHIN COMPREHENSIVE SCHOOL HEALTH



What is Farm to School BC?

- F2SBC is a **FRAMEWORK** built around promoting food literacy through a collective impact approach of catalyzing and convening sectors interested in achieving the same goal.
- F2SBC is a **NETWORK** is dedicated to supporting the development of sustainable regional food systems in BC.
- F2SBC is a **PROGRAM** supported by the Province of British Columbia and the Provincial Health Services Authority.



Our Core Elements



Our Reach

Established Regional Hubs

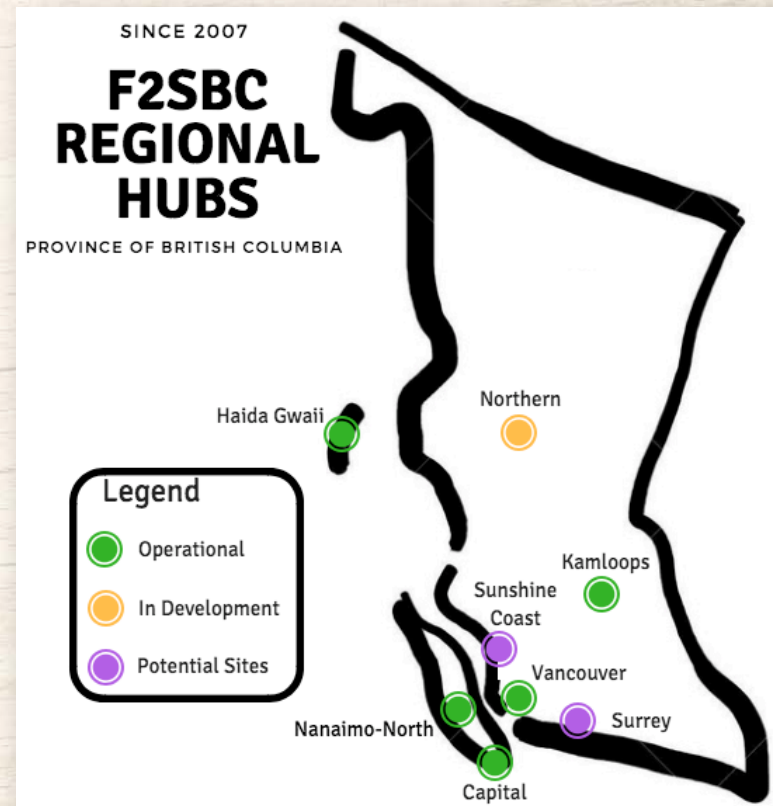
- Kamloops School District
- Greater Vancouver (VSB, North Shore, Richmond)
- Capital Region (Victoria)
- Nanaimo North (Nanaimo, Port Alberni, Tofino)

New in development:

- Northern BC (Terrace or Prince George)

Seeking development:

- Surrey
- Sunshine Coast
- Kelowna



Farm to School Activities

Kids grow food!

- School Gardens
- Tower Gardens
- Microgreens

Kids cook & serve food!

- Salad Bars
- Cooking lessons
- Smoothie
- Hot Lunch Program
- Community Event/Celebration

Kids understand food:

- Compost
- Field trips



Benefits of F2SBC Program

- Increased consumption of healthy, local food
- Increased hands-on learning
- Increased food literacy skills
- Better physical, mental and social health
- Expanding school & community connectedness
- Building teacher capacity through resources and linkages to the new curriculum



Yarrow Community School Chilliwack, BC



There's more!

- High Road Academy School (Chilliwack)
- Agassiz Elementary-Secondary School (Agassiz)
- Boston Bar Elementary Secondary School (Fraser Valley)
- Sardis Secondary School (Chilliwack)
- Godson Elementary School (Abbotsford)
- Alex Hope Elementary School (Langley)
- Seaquam Secondary School (Delta)

Our Interest

Establishing a Farm to School Regional Hub in Surrey

1. Up to 4 schools will receive \$3,500 in the school year 2018-2019
2. Part time Community Animator position
 - Pro-D / Workshops
 - In-Person Support
 - Liaison (connecting to community partners)
 - Leveraging additional funding opportunities



Requests

- Green Space in all new schools
- Feedback Opportunity for SD36 Garden policy
- Dedicated Time to introduce F2S to Surrey Teachers at a Pro-D event –Fall 2018
- 4 schools to apply for F2S grants for 2018/19

Resources

- www.farmentoschoolbc.ca
- Surrey/White Food Action Table: Deirdre Goudriaan:
deirdre@teamplayconsulting.com
- Fraser Health Public Health Dietitian:
nadia.guirguis@fraserhealth.ca
- Fraser Health Surrey Healthy Schools PHN:
tracy.wong@fraserhealth.ca