

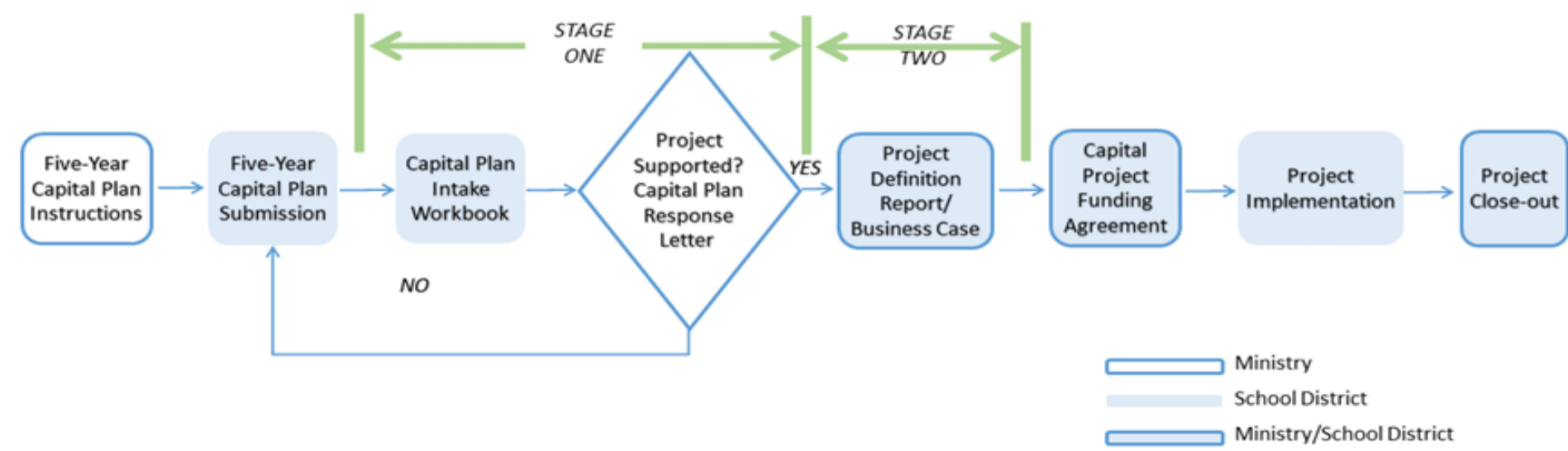
Capital Plan Submittals and Approvals Additions



Site #	Project	Type	2013 Or Earlier	2014	2015	2016	2017	2018	2019	2020	2021	2022	2023	2024
21	Sullivan Elementary	Addition	Submitted				Funded				Open			
28	North Surrey Secondary	Addition	Submitted											
134	Pacific Heights Elementary	Addition	Submitted				Funded			Open				
137	Panorama Park Elementary	Addition	Submitted				Funded		Open					
150	Tamanawis Secondary	Addition	Submitted							Supported			Funded	
153	Adams Road Elementary	Addition	Submitted											
164	Sullivan Heights Secondary	Addition	Submitted				Supported	Funded			Open			
212	Woodward Hill Elementary	Addition	Submitted				Funded	Open						
57	William Watson Elementary	Addition				Submitted								Funded
160	Frost Road Elementary	Addition				Submitted	Supported	Funded		Open				
9	White Rock Elementary	Addition					Submitted		Supported	Funded			Open	
40	KB Woodward Elementary	Addition					Submitted		Supported	Funded			Open	
49	Semiahmoo Secondary	Addition					Submitted							
61	Martha Currie Elementary	Addition					Submitted							Funded
106	Frank Hurt Secondary	Addition					Submitted							
175	Clayton Heights Secondary	Addition					Submitted						Supported	
202	Sunnyside Elementary	Addition					Submitted		Supported	Funded	Open			
47	Guildford Park Secondary	Addition						Submitted		Supported			Funded	
48	Kwantlen Park Secondary	Addition						Submitted		Supported			Funded	
118	South Meridian Elementary	Addition						Submitted		Supported	Funded			
141	Fraser Heights Secondary	Addition						Submitted						
161	Semiahmoo Trail Elementary	Addition						Submitted		Supported	Funded			
167	Fleetwood Park Secondary	Addition						Submitted			Supported			Funded
188	Morgan Elementary	Addition						Submitted	Supported	Funded			Open	
1	Hjorth Road Elementary	Addition								Submitted				
55	Lena Shaw Elementary	Addition								Submitted			Funded	
64	Old Yale Road	Addition								Submitted				Funded
70	Peace Arch Elementary	Addition								Submitted				
35	Latimer Road Elementary	Addition									Submitted			Supported
183	Forsyth Elementary	Addition									Submitted	Supported		Funded
41	Lord Tweedsmuir Secondary	Addition										Submitted		
105	Earl Marriott Secondary	Addition											Submitted	
145	Woodland Park Elementary	Addition											Funded	
152	Walnut Road Elementary	Addition											Funded	
177	Grandview Heights Secondary	Addition											Submitted	Supported
45	Johnston Heights Secondary	Addition												Submitted

- * Submitted : The first year the project appears on a Capital Plan Request submitted to the Ministry
- * Supported : Ministry approval to proceed to a Business Case
- * Funded : Ministry funding received
- * Open : Project is open for students

Figure 1-3 two-stage process:



Capital Plan Submittals and Approvals New Schools

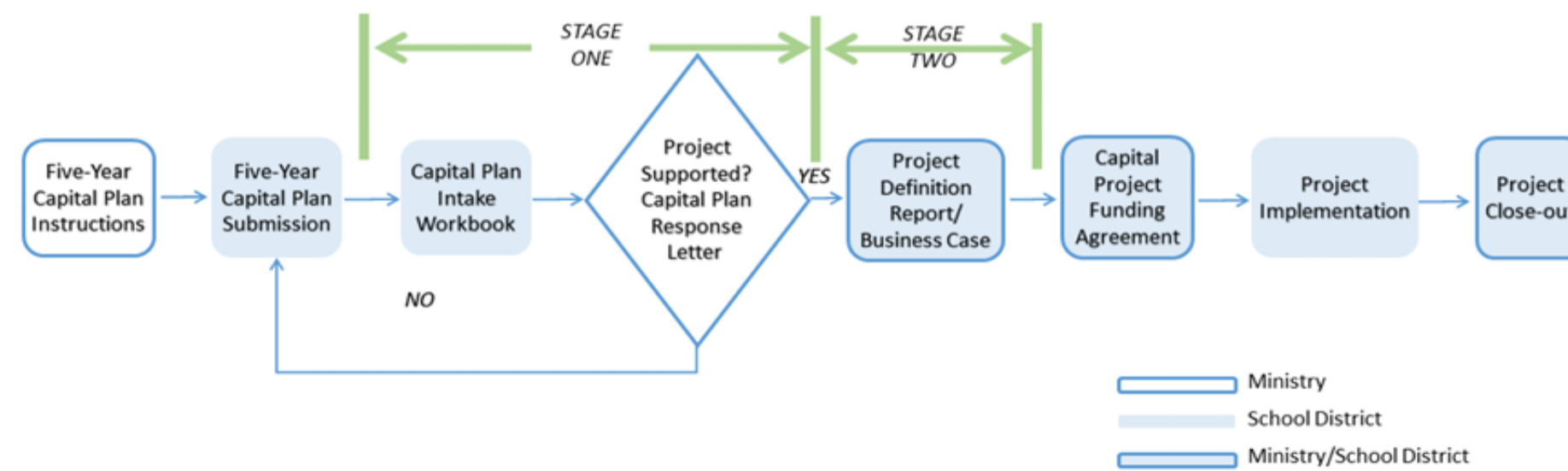


Site #	Project	Type	2013 Or Earlier	2014	2015	2016	2017	2018	2019	2020	2021	2022	2023	2024
177	Grandview Heights Secondary	New	Submitted			Funded					Open			
180	Douglas Elementary	New	Submitted				Supported	Funded		Open				
184	Maddaugh Elementary	New	Submitted			Funded					Open			
206	Edgewood Elementary	New	Submitted				Funded				Open			
208	Redwoods Area Elementary	New	Submitted											
209	South West Port Kells Area	New	Submitted											
216	South Port Kells Area Elementary	New	Submitted											
217	Clayton Village Area Elementary	New	Submitted											
218	Regent Road Elementary	New	Submitted				Supported	Funded				Open		
115	Snokomish Elementary	New				Submitted	Supported				Funded			
214	Darts Hill Area Elementary	New				Submitted								Supported
207	Ta'talu Elementary	New					Submitted	Supported		Funded				Open
52	East Newton Area Secondary	New						Submitted						
XX1	Pacific / Sunnyside Area Elementary	New						Submitted						
XX2	3rd South Port Kells Area Elementary	New						Submitted						
XX5	Anniedale Area Secondary	New							Submitted					
XX6	Abbey Ridge Elementary	New							Submitted					
42	Anniedale / Tynehead Area Elementary	New								Submitted				
213	2nd Grandview Heights Secondary	New											Submitted	
14	Clayton Urban Elementary (185th St)	New												Submitted
X11	King George Blvd Elementary	New												Submitted
X12	City Center Secondary	New												Submitted
X13	Clayton Urban Elementary (192st)	New												Submitted
X14	East Cloverdale Area Secondary	New												Submitted

- * Submitted : The first year the project appears on a Capital Plan Request submitted to the Ministry
- * Supported : Ministry approval to proceed to a Business Case. Support is dependant on enrolment need.
- * Funded : Ministry funding received
- * Open : Project is open for students

1.

Figure 1-3 two-stage process:



Capital Plan Submittals and Approvals
Replacements / Seismics / New Sites



Site #	Project	Type	2013 Or Earlier	2014	2015	2016	2017	2018	2019	2020	2021	2022	2023	2024
50	Mountainview Montessori	Replacement	Submitted											
59	Riverdale Elementary	Replacement	Submitted											
2	Port Kells Elementary	Replacement					Submitted							
22	Queen Elizabeth Secondary	Seismic	Submitted					Supported		Funded		Open		
44	Prince Charles Elementary	Seismic	Submitted					Supported		Funded		Open		
54	Mary Jane Shannon Elementary	Seismic	Submitted				Funded			Open				
58	David Brankin Elementary	Seismic	Submitted											
69	Bear Creek Elementary	Seismic	Submitted				Funded	Open						
81	Holly Elementary	Seismic	Submitted					Supported	Funded			Open		
90	George Greenaway Elementary	Seismic	Submitted					Supported	Funded			Open		
208	Redwoods Area Elementary	Site	Submitted					Supported		Funded				
209	South West Port Kells Area	Site	Submitted											
216	South Port Kells Area Elementary	Site	Submitted											
217	Clayton Village Area Elementary	Site	Submitted											
115	Snokomish Elementary	Site				Submitted	Funded							
214	Darts Hill Area Elementary	Site				Submitted		Supported		Funded				
207	Ta'talu Elementary	Site					Submitted	Funded						
52	East Newton Area Secondary	Site						Submitted						
XX1	Pacific / Sunnyside Area Elementary	Site						Submitted						
XX2	3rd South Port Kells Area Elementary	Site						Submitted						
XX3	Fleetwood Area Elementary	Site						Submitted						
XX4	Bothwell Area Elementary	Site						Submitted						
42	Anniedale / Tynehead Area Elementary	Site							Submitted				Funded	
XX5	Anniedale Area Secondary	Site							Submitted					
XX6	Abbey Ridge Elementary	Site							Submitted					
13	Clayton Elementary	Site								Submitted				
16	Grandview Elementary	Site								Submitted				
213	2nd Grandview Heights Secondary	Site											Submitted	Funded
X10	Fleetwood Area Elementary (4)	Site											Submitted	
XX7	Fleetwood Area Elementary (2)	Site											Submitted	
XX8	Fleetwood Area Secondary	Site											Submitted	
XX9	Fleetwood Area Elementary (3)	Site											Submitted	

- * Submitted : The first year the project appears on a Capital Plan Request submitted to the Ministry
- * Supported : Ministry approval to proceed to a Business Case. Support is dependant on enrolment need.
- * Funded : Ministry funding received
- * Open : Project is open for students