



Snokomish Boundary Changes Recommendation

Board Meeting
November 2024

Guiding Principles

- Keep students as close to their neighbourhood schools as possible
- Provide relief to schools most over capacity now and in the future
- Create boundaries that will stand the test of time and that align with the District's long-range planning
- Boundary considerations should include development applications in process
- Programs of choice to be considered alongside adjustments to neighbourhood catchments

Nearest Elementary Schools:

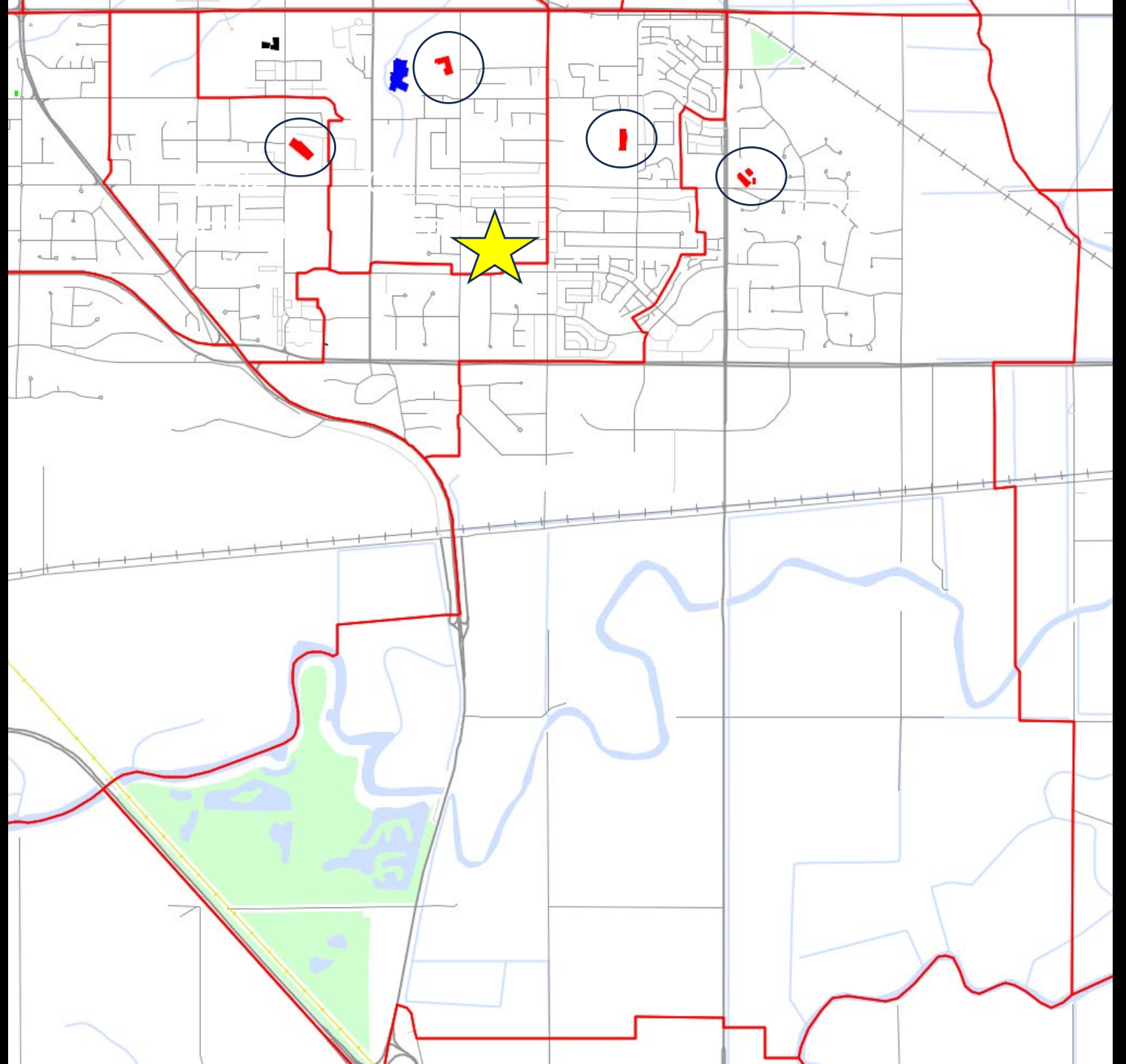
Cambridge

Goldstone Park

Sullivan

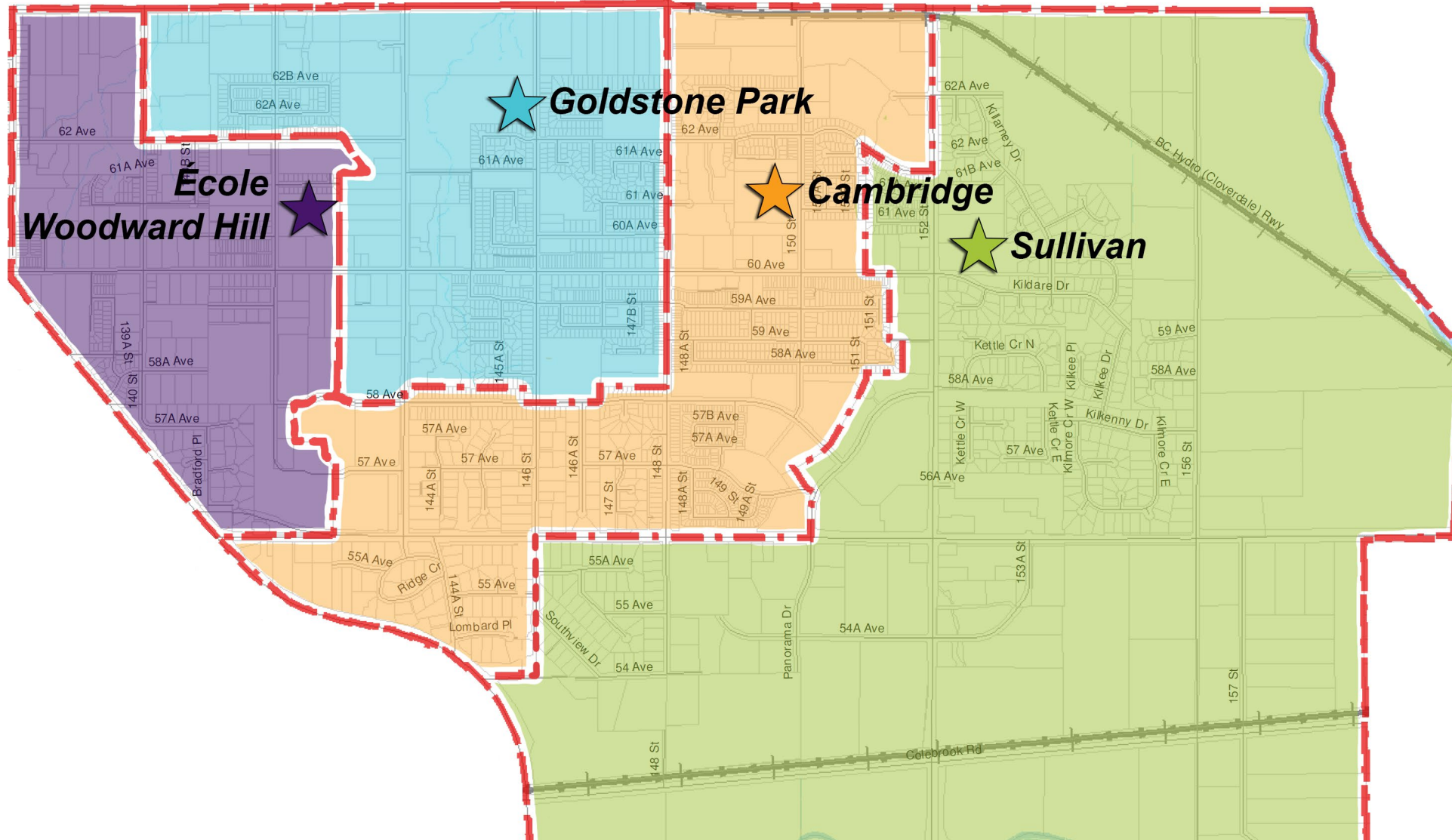
Ecole Woodward Hill

And the new Snokomish is located at 14778 58B Ave, next to Goldstone Park.



Sullivan Heights Area Elementary Catchments

Current Boundaries for Cambridge, Goldstone Park, Sullivan and École Woodward Hill elementary schools



Consultation Process

- 4 open houses were held along with online feedback and discussions with school staff and principals.
 - Cambridge Elementary – May 15
 - Goldstone Elementary – May 22
 - Sullivan Elementary – May 28
 - Woodward Hill – May 29

Options Presented

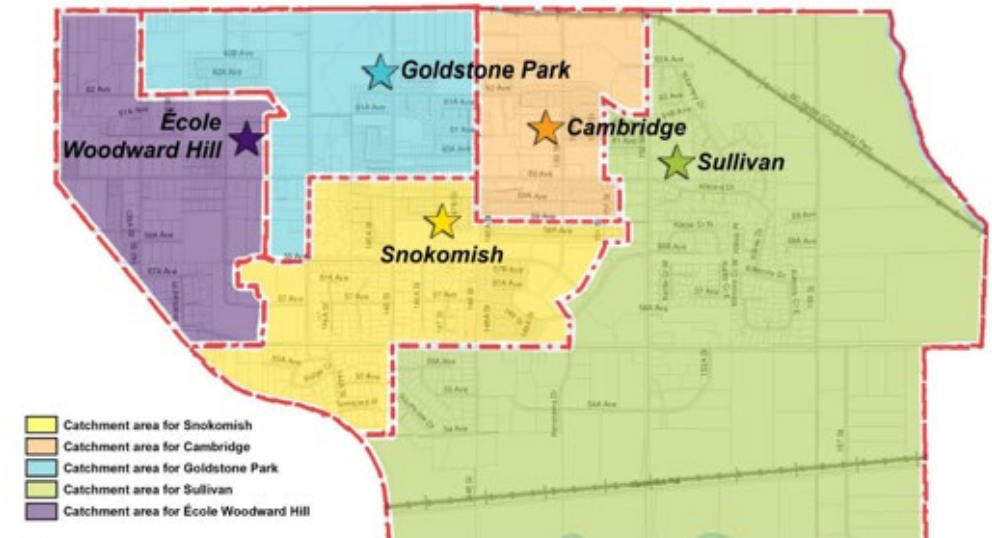
- Options 1 and 2

French Immersion does not move.

Option 1

Option 1: Cambridge & Goldstone Park to Snokomish, No FRIMM Move

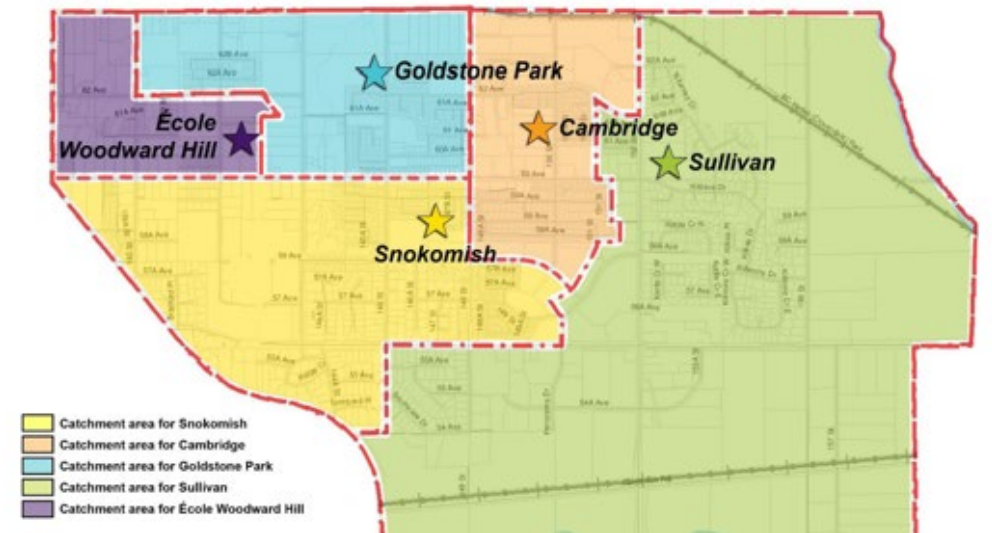
K-6 students in the Cambridge (south of 59th Ave.) and GP (south of 60th Ave., east of 144th St.) catchments would attend Snokomish Elementary. French Immersion would stay at École Woodward Hill.



Option 2

Option 2: Cambridge, GP & Woodward Hill to Snokomish, No FRIMM Move

K-6 students in the Cambridge (south of 58th Ave.), GP and École Woodward Hill (south of 60th Ave.) catchments would attend Snokomish Elementary. French Immersion would stay at École Woodward Hill.



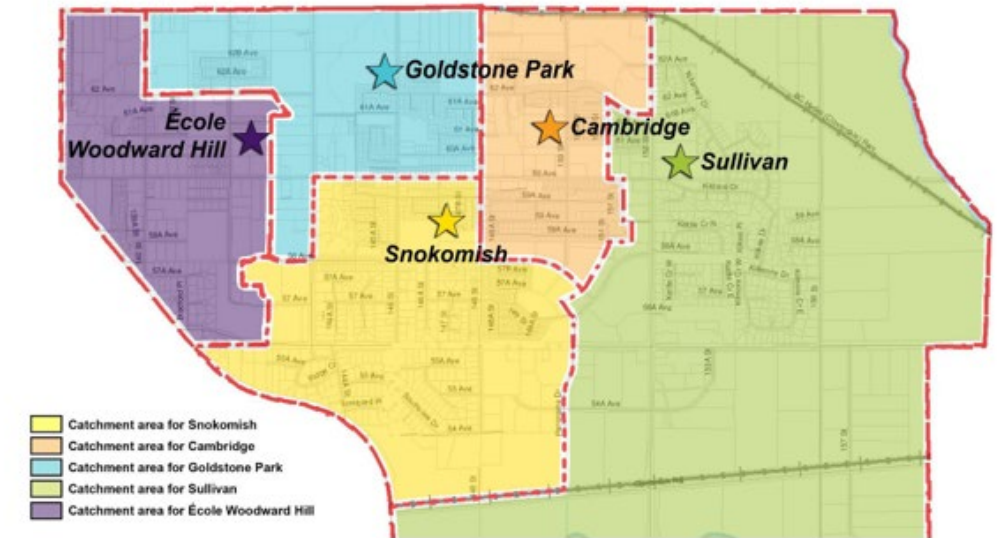
Options Presented

- Options 3 and 4

French Immersion Moves

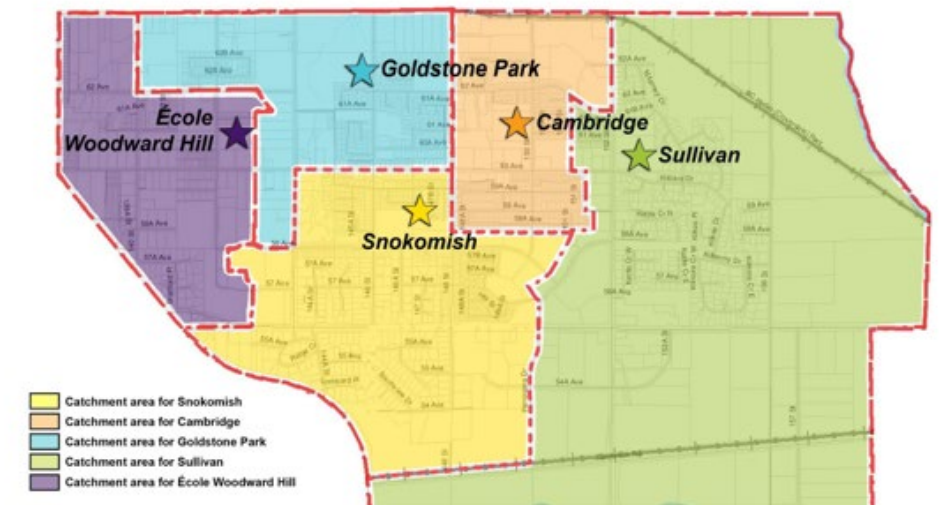
Option 3

Option 3 Recommended: Cambridge, GP & Sullivan to Snokomish, With FRIMM Move
K-6 students in the Cambridge (south of 58th Ave.), GP (south of 60th Ave., east of 144th St.) and Sullivan (north of railway, west of Panorama Dr.) catchments would attend Snokomish Elementary. French Immersion would move from École Woodward Hill to Snokomish.



Option 4

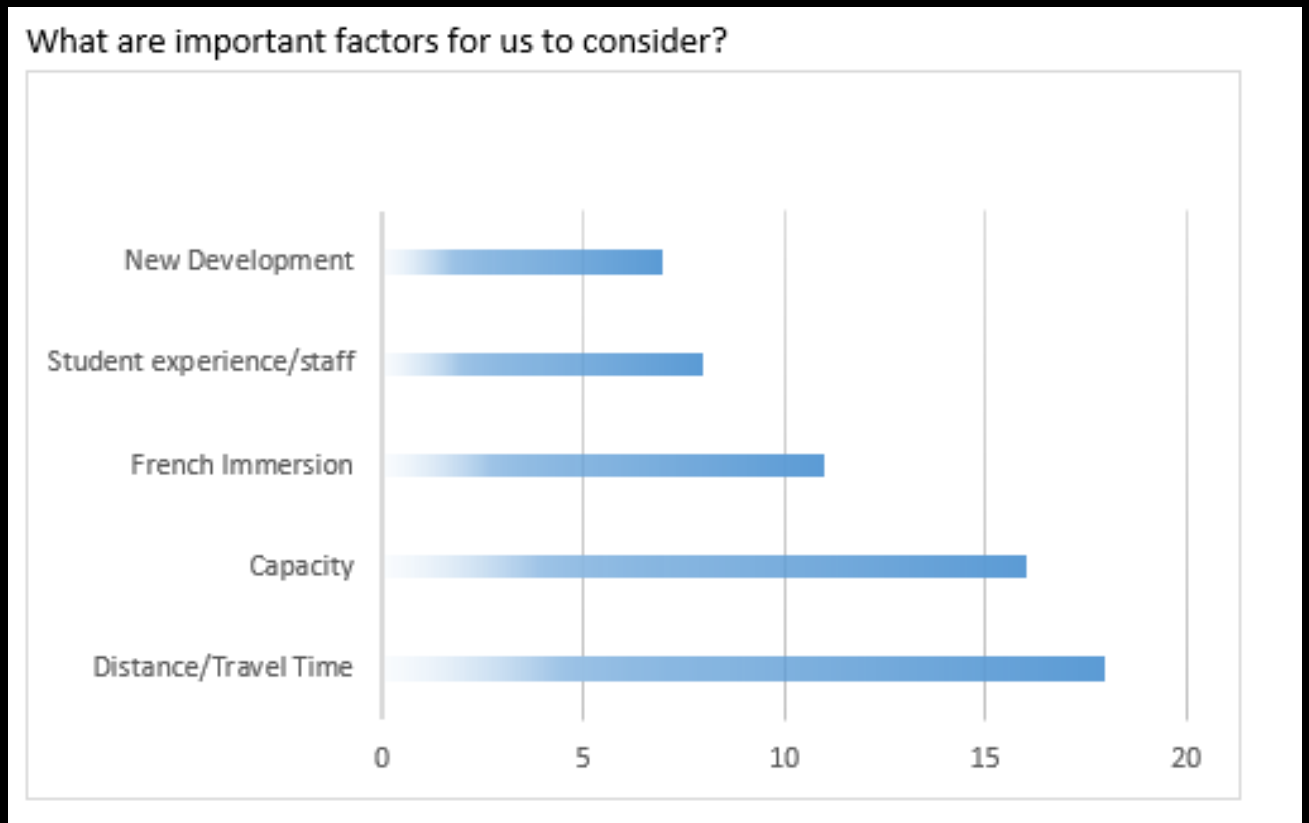
Option 4: Cambridge, GP & Sullivan to Snokomish, With FRIMM Move
K-6 students in the Cambridge (south of the line between 58th & 58A Ave.), GP (south of 60th Ave., east of 144th St.) and Sullivan (north of railway, west of Panorama Dr.) would attend Snokomish Elementary. French Immersion would move from École Woodward Hill to Snokomish.



Consultation Results

In total, 45 surveys were filled out with approximately 70 people attending the 4 open houses. Feedback was very positive around the new school and space for students, with mixed feedback around the new catchment boundaries and the proposal to move French Immersion.

Distance/Travel Time and school capacity were the most common responses when asked about factors for the District to consider.

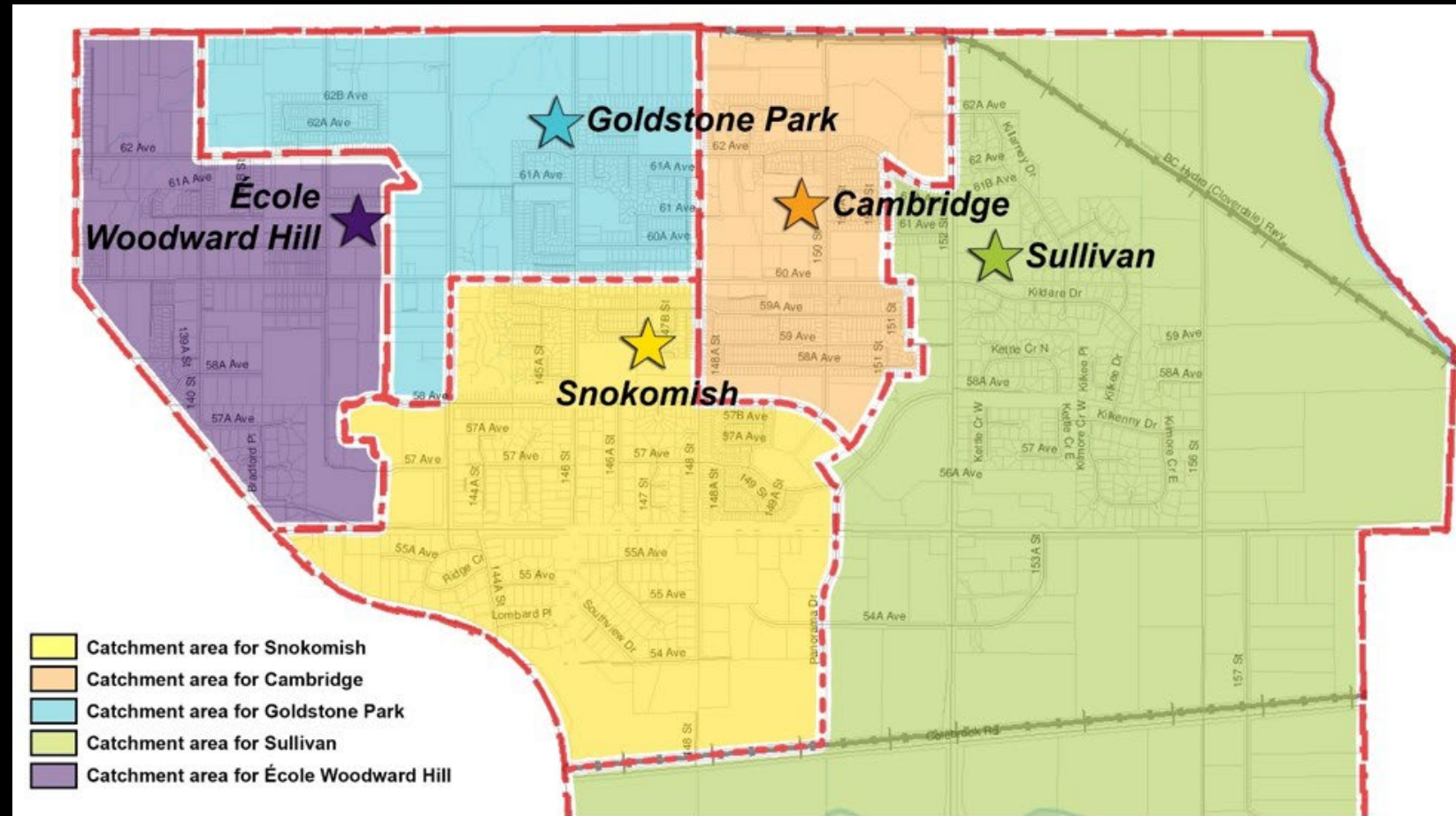


Proposed new catchment map for Snokomish

Recommendation is for option 3, as presented as the preferred option throughout consultation.

This option moves all French Immersion Students to Snokomish.

This alleviates pressure throughout South Newton and best addresses the guiding principles.



Next Steps

Board approval of the new catchment boundary.

Hiring new principal late 2024/early 2025.

Kindergarten registration in January 2025.

Snokomish classes are established in existing schools September 2025.

School opens Spring 2026.



Thank you