

**BOARD OF EDUCATION  
OF  
SCHOOL DISTRICT NO. 36 (SURREY)**

**BYLAW #355, RE: KWANTLEN PARK SECONDARY (SITE 048)  
STATUTORY RIGHT-OF-WAY  
SIDEWALK MAINTENANCE**

THAT the Board grant a Statutory Right-of-Way at Kwantlen Park Secondary (Site 048) located at 10441 132 Street, legally described as Parcel Identifier: 025-012-045, Lot 1 Section 21 Block 5 North Range 2 New Westminster District Plan 49629.

The Statutory Right-of-Way, in favour of the City of Surrey, running along east property lines is required for sidewalk maintenance.

The Statutory Right-of-Way 0.5 meter along road frontage on 132 Street as indicated on the attached plan in **red**.

THAT the Board's signing officers execute the Statutory Right-of-Way agreement

The Statutory Right-of-Way will have no adverse effect on the use of the site by the school district; or our ability to dispose of the site in the future.

READ A FIRST TIME THE 14TH DAY OF FEBRUARY, 2024.

READ A SECOND TIME THE 14<sup>TH</sup> DAY OF FEBRUARY, 2024.

READ A THIRD TIME, PASSED AND ADOPTED THE 14<sup>TH</sup> DAY OF FEBRUARY, 2024.

Seal

\_\_\_\_\_  
Chairperson of the Board

\_\_\_\_\_  
Secretary-Treasurer

I HEREBY CERTIFY this to be a true and original of School District No. 36 (Surrey) Bylaw #355, Re: Kwantlen Park Secondary (Site 048) Statutory Right-of-Way – Sidewalk Maintenance adopted by the Board the 14<sup>th</sup> day of February, 2024.

\_\_\_\_\_  
Secretary-Treasurer

/dg

REFERENCE PLAN OF PART OF LOT 1 SECTION 21 BLOCK 5 NORTH  
RANGE 2 WEST NEW WESTMINSTER DISTRICT PLAN LMP49629

PLAN EPP133177

B.C.G.S. 926.016  
PURSUANT TO SECTION 107, THE LAND TITLE ACT

LEGEND

- ⊙ DENOTES CONTROL MONUMENT FOUND
- DENOTES STANDARD IRON POST FOUND
- DENOTES STANDARD IRON POST SET
- m<sup>2</sup> DENOTES SQUARE METRES
- N# DENOTES NOT FOUND

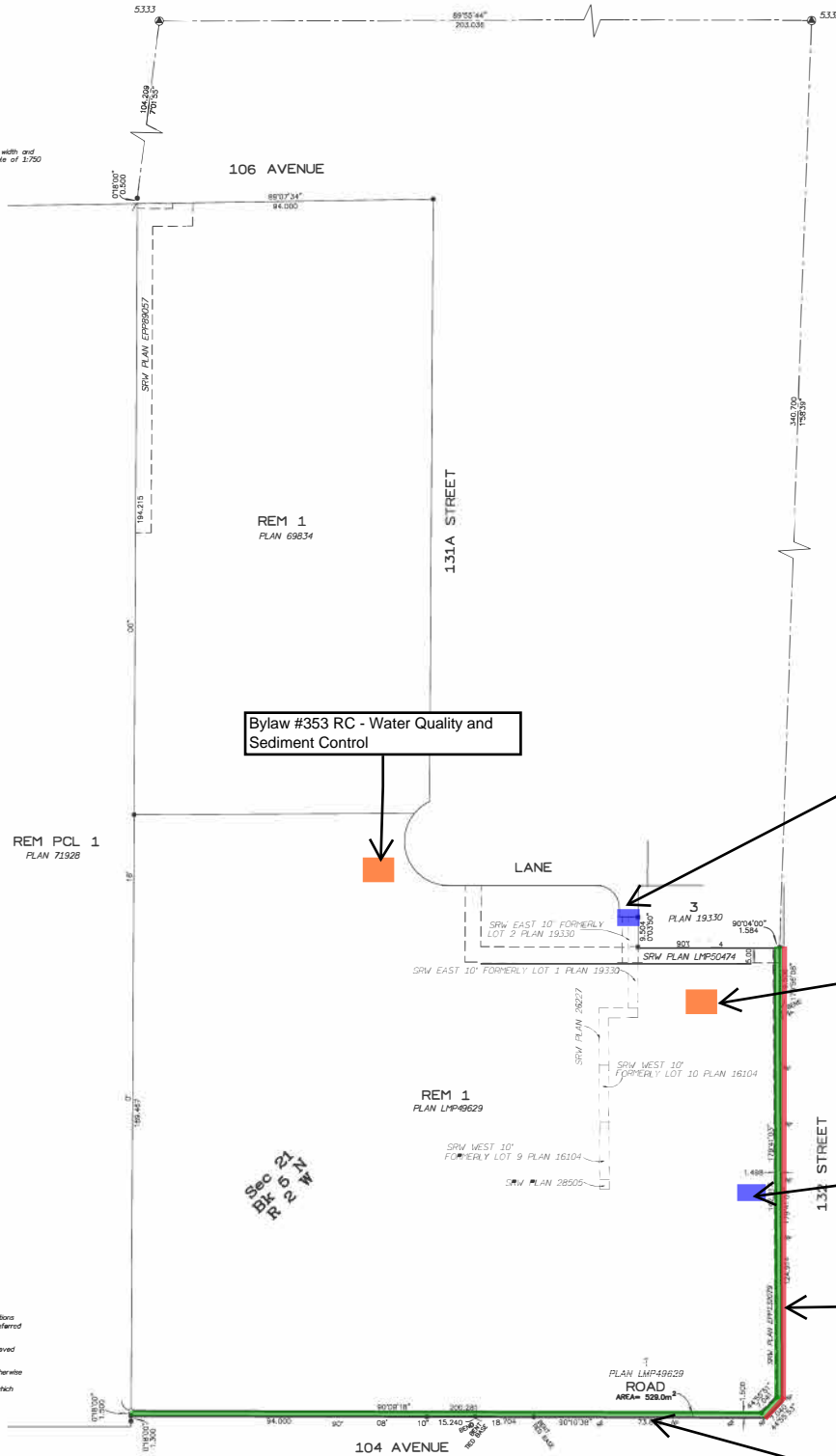
Coordinates shown are for mapping purposes only.



SCALE 1 : 750



The attached plot size of the plan is 500mm in width and 868mm in height (D size) when plotted at a scale of 1:750  
ALL DISTANCES ARE IN METRES



Bylaw #353 RC - Water Quality and Sediment Control

Bylaw #354 RC - New Sanitary Connection

Bylaw #353 RC - Water Quality and Sediment Control

Bylaw #354 RC - New Water Connection

Bylaw #355 SROW - Sidewalk Maintenance

Bylaw #356 - Road Dedication

**INTEGRATED SURVEY AREA No. 1, SURVEY**  
NAD 83 (CSRS) 40.0BC1.MHRD  
Grid bearings are derived from conventional survey observations to geodetic control monuments 5332 and 5333 and are referred to the central meridian of UTM Zone 10N.  
The UTM coordinates and estimated absolute accuracy achieved are derived from GeoBC Placot Published Information.  
This plan shows horizontal ground-level distances unless otherwise specified. To compute grid distances, multiply ground-level distances by the average combined factor of 0.9999918, which has been derived from control monument 5332.

Datum: NAD 83 (CSRS) 40.0BC1.MHRD	UTM Zone: 10 N
UTM Coordinates	N: 5449275.33
E: 5104574.64	5333
Absolute accuracy: +/-0.03	
Datum: NAD 83 (CSRS) 40.0BC1.MHRD	UTM Zone: 10 N
UTM Coordinates	N: 5449275.78
E: 5104575.60	5332
Absolute accuracy: +/-0.03	

This plan lies within the jurisdiction of the Approving Officer for the City of Surrey.

The field survey represented by this plan was completed on the 27th day of October, 2021.  
M. Adam Fulwerson, BCLS 906

THIS PLAN LIES WITHIN THE METRO VANCOUVER REGIONAL DISTRICT

