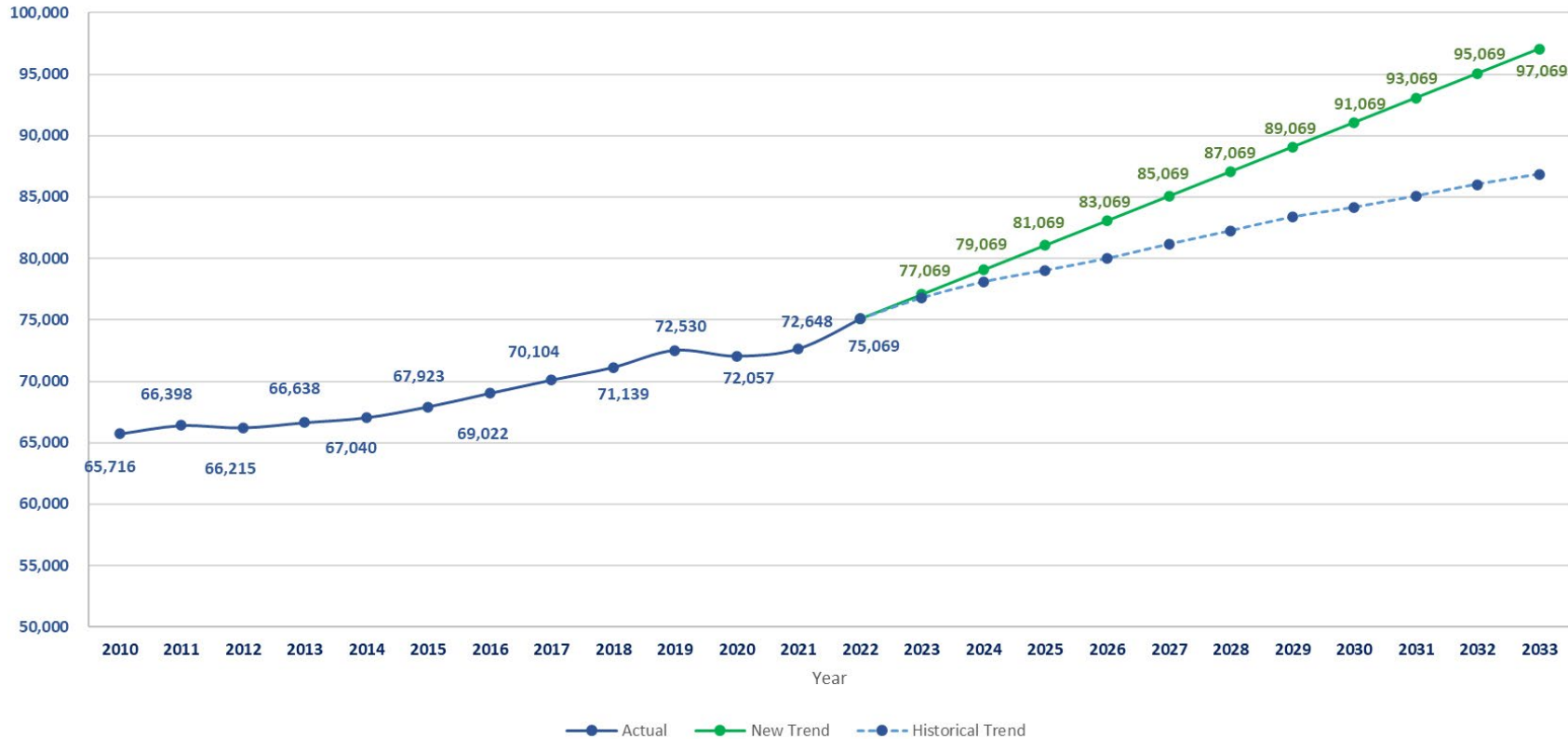


Fleetwood and the Impact of the Skytrain

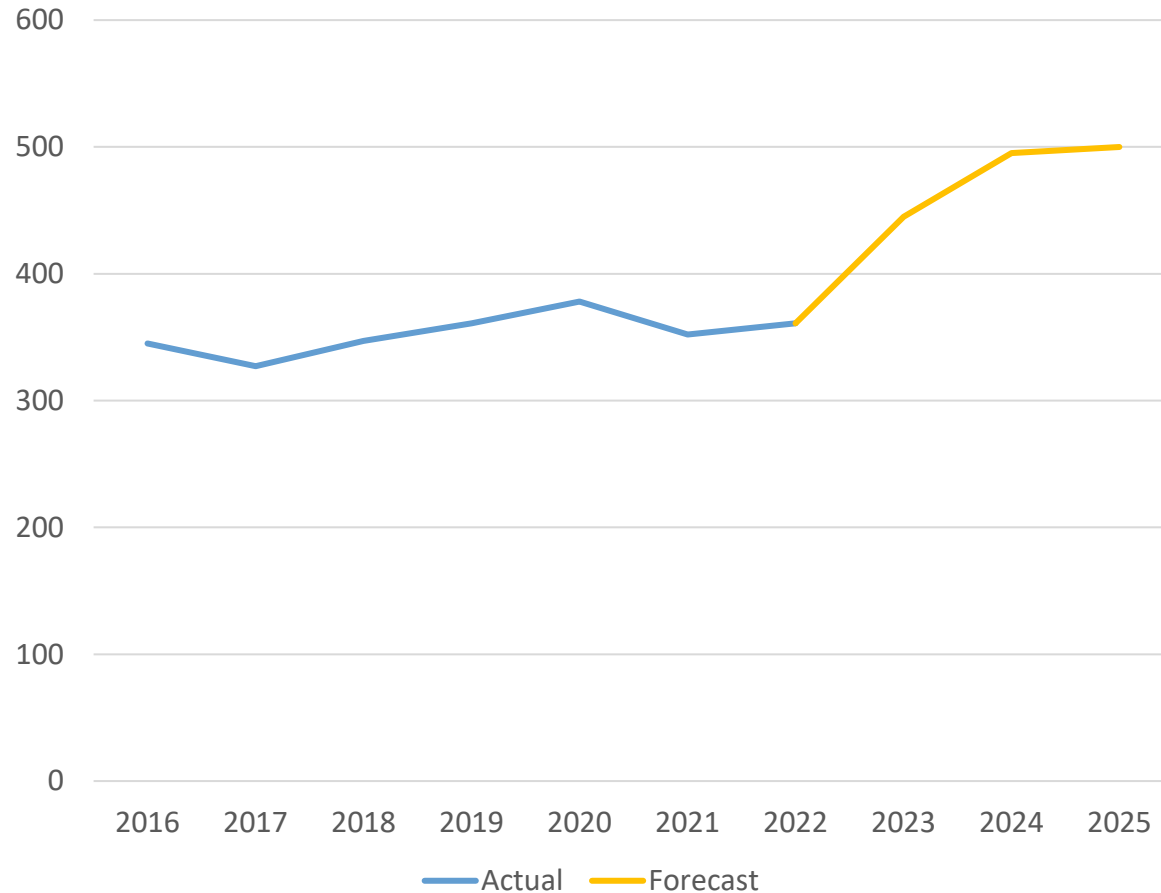
Board of Education Meeting – March 8th, 2023

Growth – District Overall



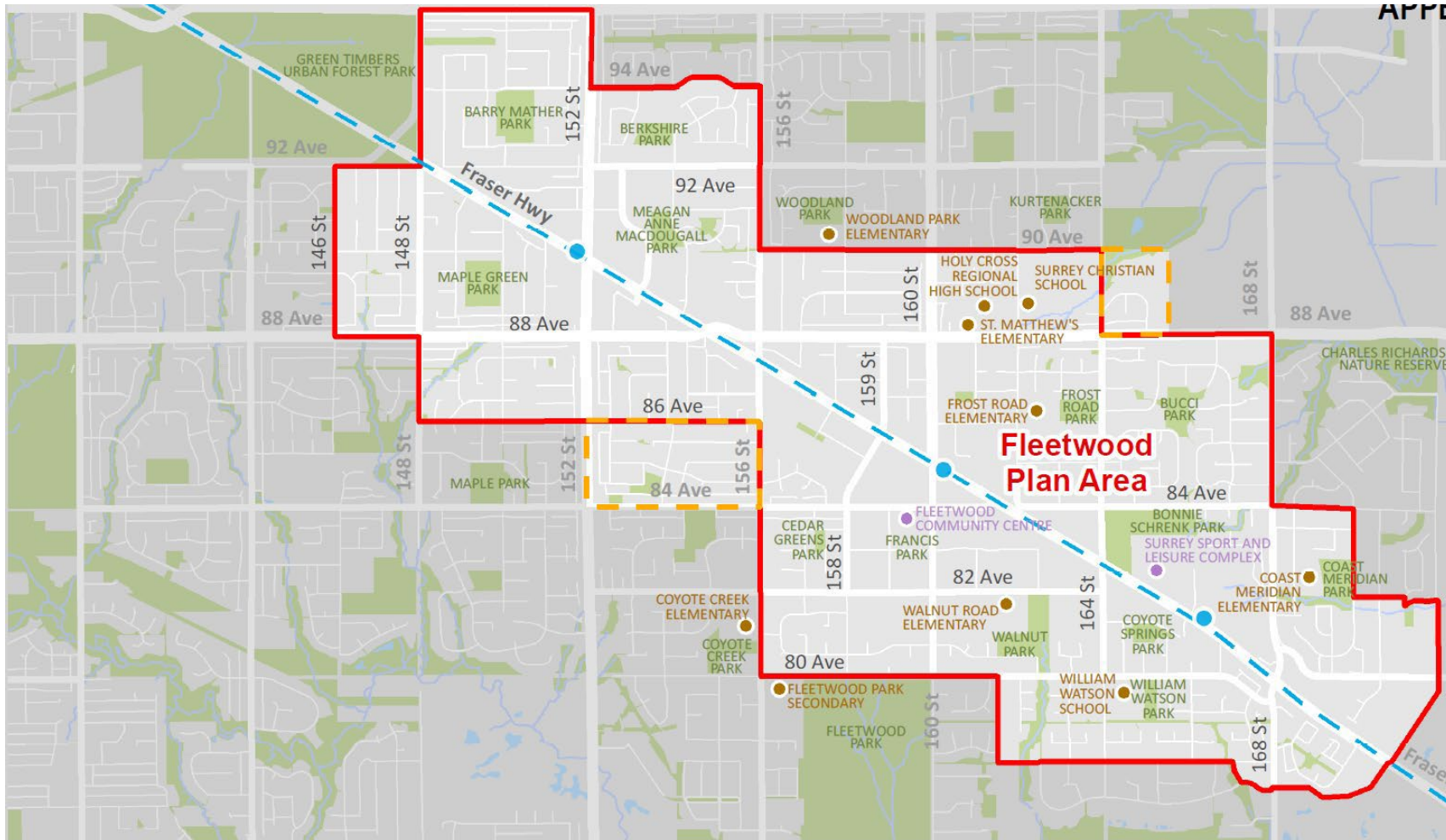
- Current enrolment is 75,000
- Surrey's growth has been constant and is continuing into the future
- Expecting between 84,000 and 91,000 Students in 2030

Enrolment Portables Required



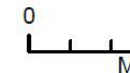
- Had 378 total in 2020, decreased to 361 through Capital Projects
- Moving 39 portables this summer for enrolment growth
- Buying 35 new portables to relieve enrolment pressure in the future
- No new seats will open in 2024
- Ta'talu is projected to open in January 2025

Fleetwood Plan Boundary



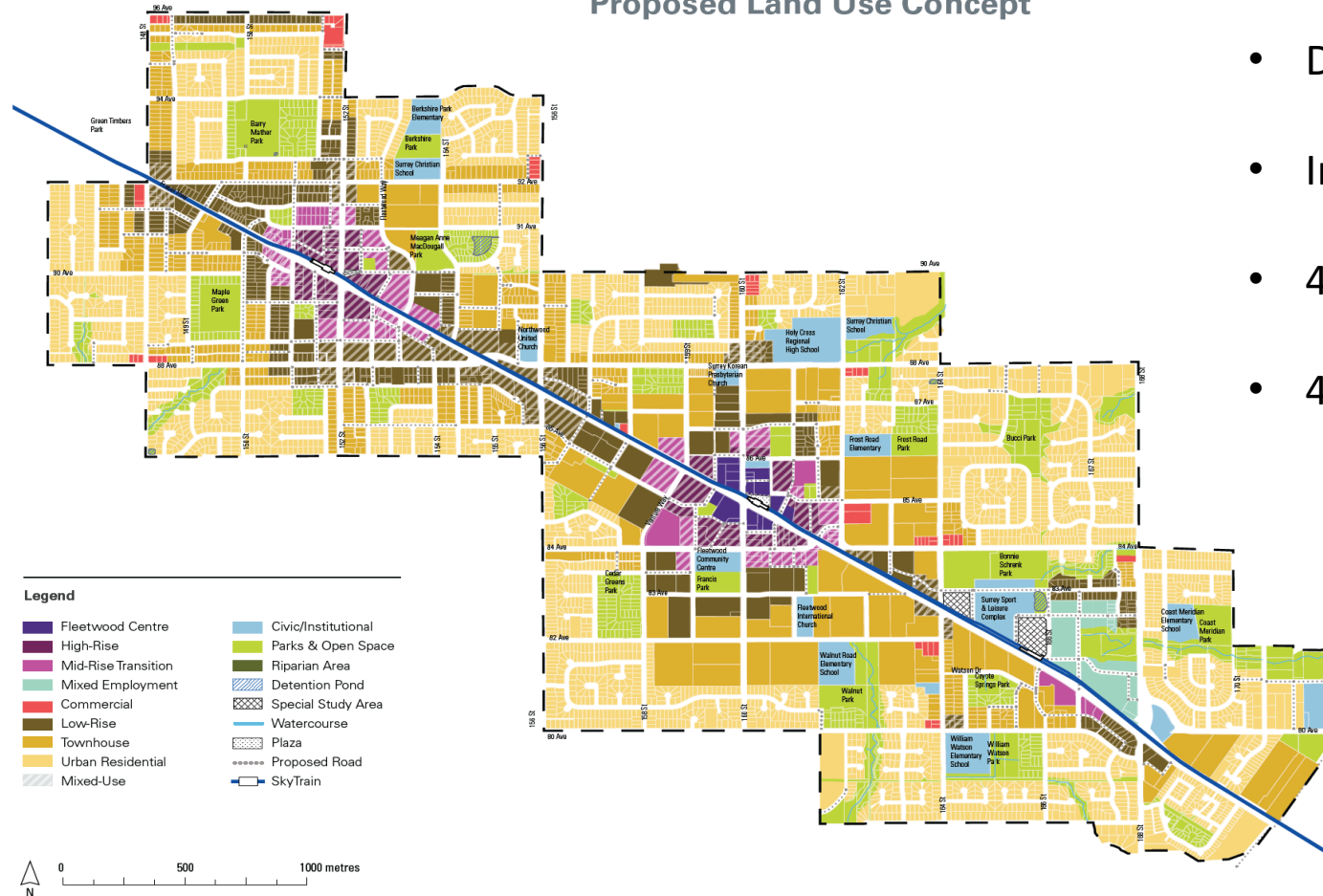
Legend

-  Plan Area
-  Proposed Plan Boundary Extension Area
-  SkyTrain Station
-  Surrey Langley SkyTrain Line



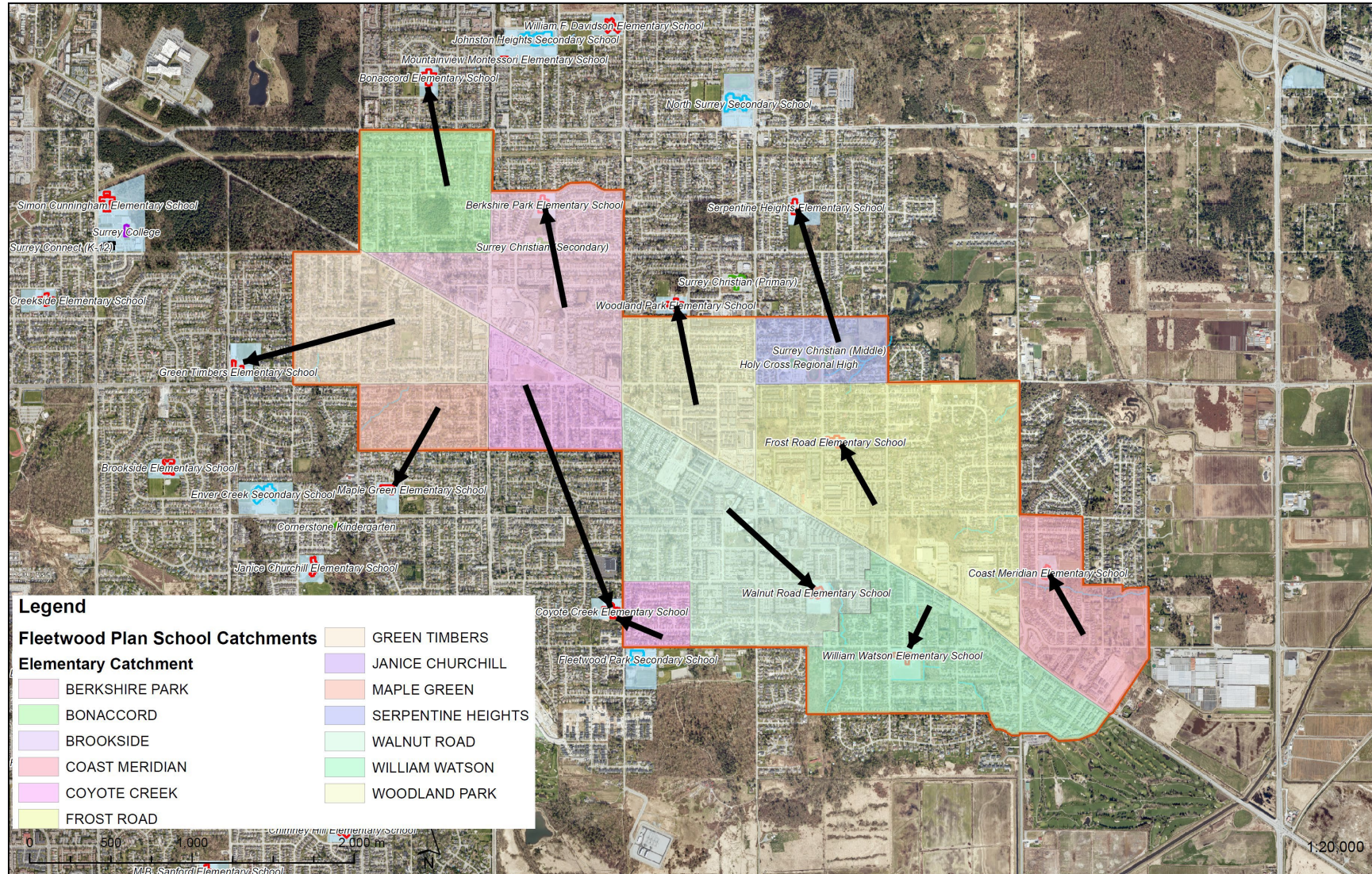
- Population expected to increase from 47,000 up to 147,000
- Similar Population to North Vancouver or Kelowna

Proposed Land Use Concept



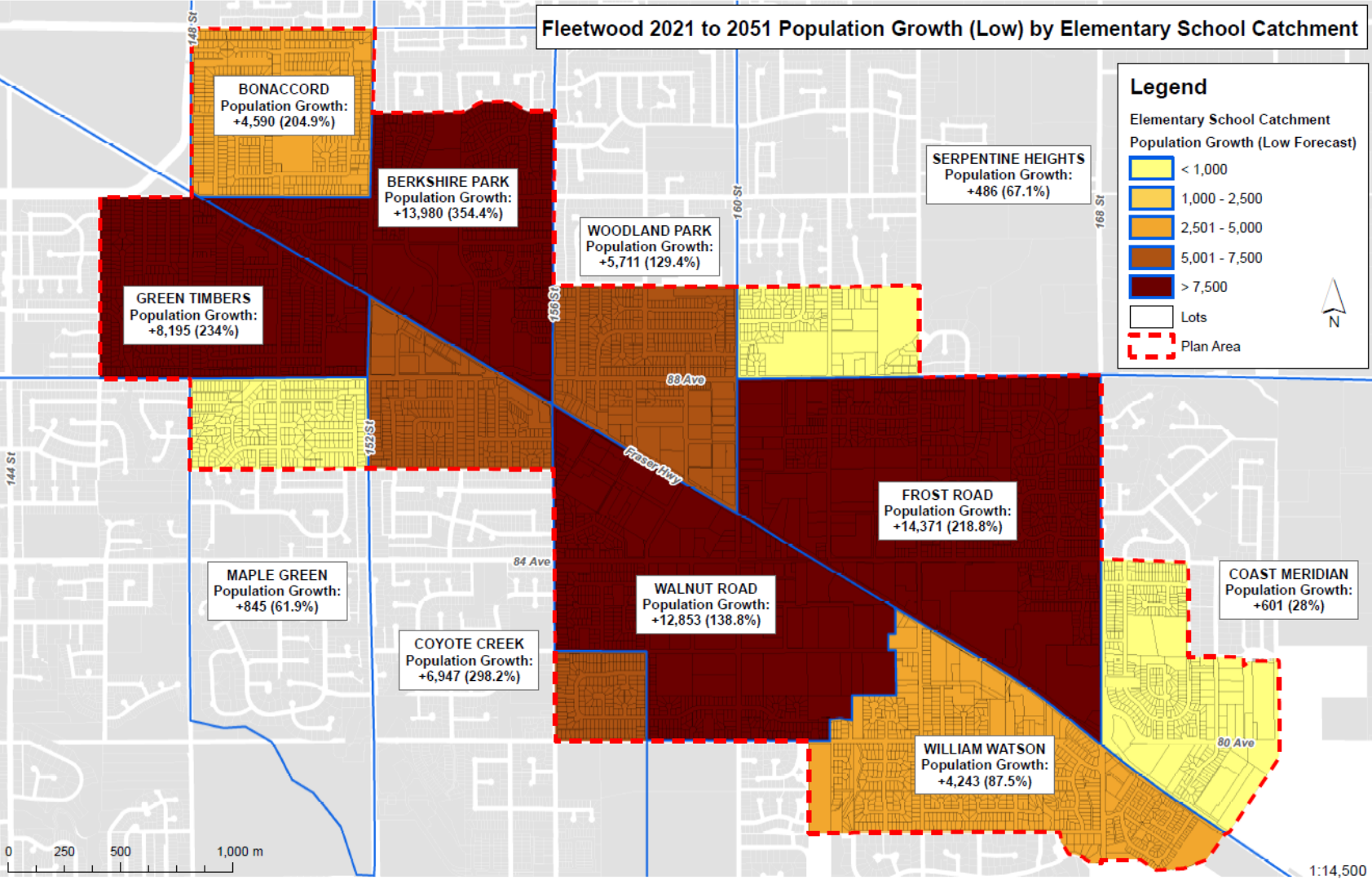
- Decrease in Single Family Homes
- Increase in Apartments and Townhomes
- 40% of Apartments will be 2+ bedrooms
- 40% of Townhomes will be 3+ bedrooms

Elementary School Catchments



V:\Policy&Long Range\GIS_ANALYSIS\FLEETWOOD\FLEETWOOD PLAN\Fleetwood Plan School Catchments_Elementary.mxd

Projected Population by Elementary Catchment



V:\Policy&Long Range\GIS_ANALYSIS\FLEETWOOD\FLEETWOOD PLAN\Walkshed Analysis\School Zone Analysis\FLEETWOOD PLAN School Catchment (Elementary).mxd

Fleetwood Plan – Student Projections

High Scenario Buildout - Student Projections

Housing Type	2020 to 2025	2025 to 2035	2035 to 2045	2045 to 2055	2055 to 2065	2065 to 2085	Total
Apartments	224	1,174	861	1,729	502	57	4,547
Townhouse	-	1,803	90	2,970	981	439	6,283
Single Family	-	468	-	91	401	373	1,333
Grand Total	224	3,445	951	4,790	1,884	869	12,163

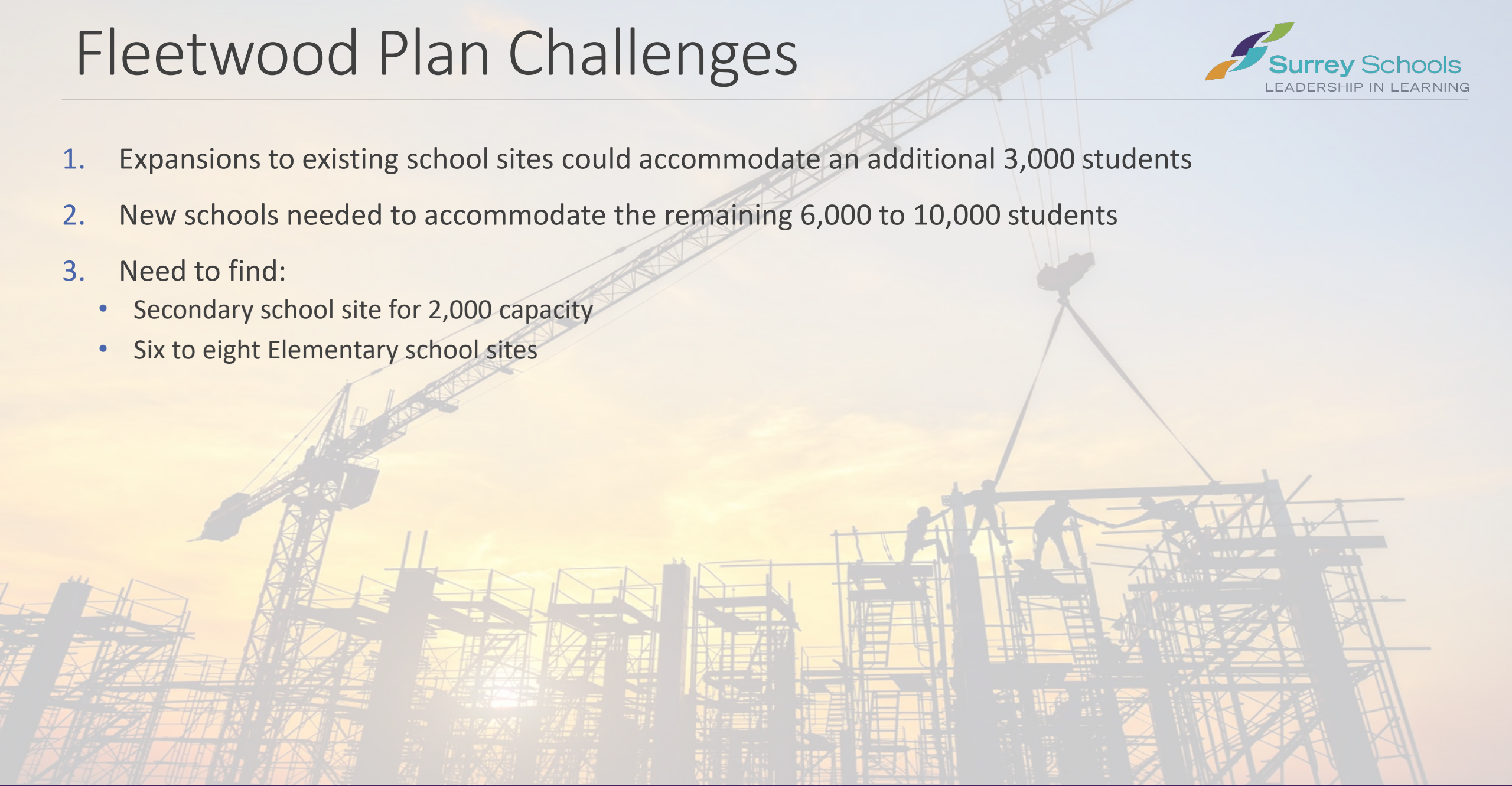
Low Scenario Buildout - Student Projections

Housing Type	2020 to 2025	2025 to 2035	2035 to 2045	2045 to 2055	2055 to 2065	2065 to 2085	Total
Apartments	160	808	557	1,090	321	33	2,969
Townhouse	-	1,266	61	2,034	679	300	4,340
Single Family	-	403	-	69	334	282	1,088
Grand Total	160	2,477	618	3,193	1,334	615	8,397

Based on NCP density - does not account for “Bonus Density” which could be significantly higher

Fleetwood Plan Challenges

1. Expansions to existing school sites could accommodate an additional 3,000 students
2. New schools needed to accommodate the remaining 6,000 to 10,000 students
3. Need to find:
 - Secondary school site for 2,000 capacity
 - Six to eight Elementary school sites



District Specific Strategies

1. Purchase land as soon as possible
 - Currently working with City Staff to identify potential sites
 - Co-locate with Parks where possible
 - Dependant on Ministry funding
2. Partner with City and Developers
 - Looking for opportunities to partner with developers
 - Integration of school locations into land use plans
3. Considering an Urban School model
 - Potential for multi-storey schools with underground parking
 - Integration of schools into mixed use developments or community centers

Urban Schools

Crosstown Elementary,
Vancouver



Urban Settings – Considerations for School Design

Exploring research for Urban
School settings:

- Designing Inclusive Learning Spaces
- School Culture and Community
- Outdoor Play Space
- Supervision, Egress, Emergency Procedures
- Unique Opportunities for Student Learning





Urban Schools – Opportunities for Shared Spaces:

- Physical Health Education & Fitness Areas
- Art Studios
- Library & Learning Commons
- Science Labs
- Culinary Arts & Kitchen Areas
- External Partnerships

Learning from Other Jurisdictions



Crosstown Elementary (Vancouver)



Canoe Landing Centre (Toronto)



Urban Academy (New Westminster)



Coal Harbour Elementary (Vancouver)

Questions
